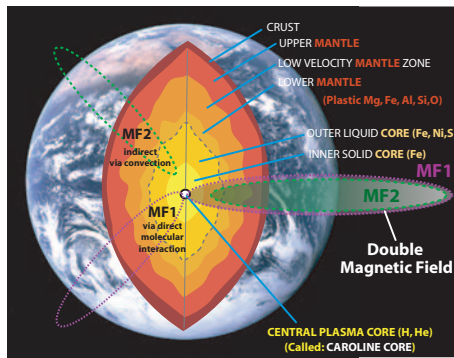




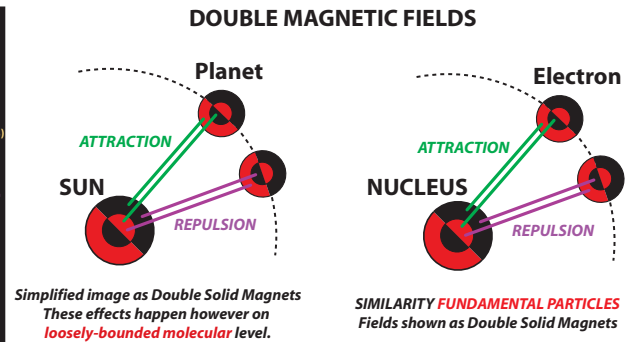
# KESHE TECHNOLOGIES

## Static and Dynamic Plasma Reactors

Keshe Plasma Reactors are designed upon nuclear principles (i.e. the dynamics and interactions of atomic and molecular elements in vacuum and rotating environments), and in analogy with basic properties as described in astrophysics and cosmology, with the creation of stars, with the concept of our Solar system. Also the Keshe discovery of the principle of **double magnetic field(s)** in micro and macro cosmos is applied in the new reactors. This is one of the new solutions to realize nuclear fusion, semi-fusion or combination of fusion and fission in a new "soft" way. Therefore Keshe Plasma Reactors are in principle **temperature and pressure independent**, meaning they also can work at atmospheric conditions or room temperature.



Double or multi magnetic fields can be created in Keshe Plasma Reactors.

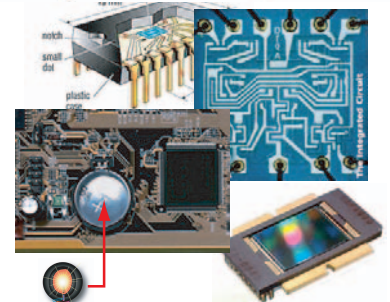


Like in Nature, many type of plasma interactions and processes are possible which made M.T. Keshe, nuclear reactor engineer, design a range of **static** and **dynamic** reactor concepts, each serving another purpose, such as; **energy production** (in the form of heat, electric current, light, cooling, etc.); the creation of **gravitational field(s)** for vertical and horizontal motion, replacing frictional systems like wheels; **decontamination and filtering processes** (i.e. CO2 filtering, production of clean water, new type of magnets like cadmium magnets); **compression systems** (i.e. suspension); **matter-convert systems** (i.e. the production of ballistic conductive **graphene** for nano applications, waste treatments); **atomic welding systems**, etc. There are several working prototypes.

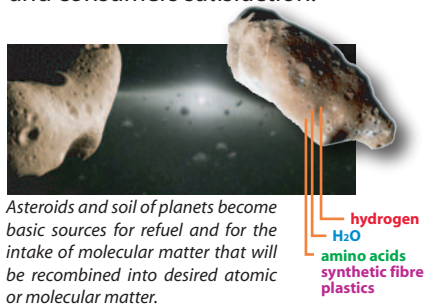
By using the magnetic bio-chemical nuclear method available atoms and molecules can convert into **new type of materials** - i.e. with high purity, high strength, low weight - for various industries. This includes industrial production of elements of the periodic table and their isotopes which were never man-made before, even not experimentally.

Keshe Plasma Reactors can i.e. be used with or built-in into various products and devices, such as longevity Plasma batteries for electronics and consumer goods, built-in in household products, machinery and robots, built-in in various vehicles and transport systems (airplanes, trains, ships, space vehicles and satellites). Where on one side this technology will reduce the number of parts inside products and devices, it will create new markets and a large number of new and re-designed products which will provide added value and consumers satisfaction.

### Changing ... the Architecture of Products, Devices and Services



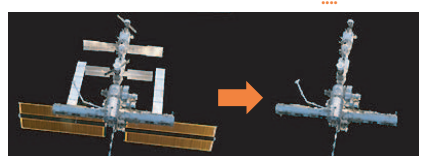
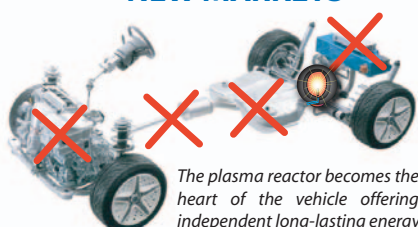
Powering electronics and micro-electronics  
New concepts of Integrated Circuits and Microchips  
New super and ballistic conductive materials



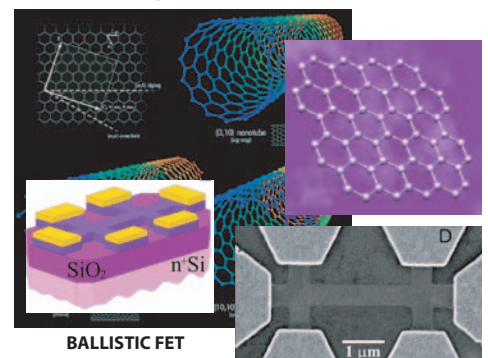
### Various fields - Some Examples



### NEW MARKETS



Space exploration, observation and exploitation systems, machines and devices become independent from outside power sources, such as solar radiation for solar cells.



Licensor: Keshe Technologies N.V. (i.o) - Belgium  
More info:  
keshe.foundation@gmail.com or info@keshetechnologies.com  
© Stichting The Keshe Foundation 2005/2006. All Rights Reserved.  
Several International Patents Pending