

KF PLASMA TIMES



JUNE 2019, 12TH EDITION

GANS Capturing Kits

Million of Suns
in one container.

Growing Nutritious Food Using GANS

An investigation to
determine whether using the
GaNS on seeds can
improve the Nutritional value
of our food.

KF SSI Education Lesson Plan

Hydrogen.
Deuterium.
Tritium.

Duality of Existence

The link between us, the
Creator and the Creation
of our own physicality.

Washer Detergent Ball Experiment

The cleansing effect of
plasma fields on
solid matter.



TABLE OF CONTENTS

03	— KESHE FOUNDATION NEWS	Glands - Converting Carbon-14 to Deuterium
04	— KESHE FOUNDATION NEWS	MAGRAV the Converter of Carbon-14
06	— KESHE FOUNDATION NEWS	Duality of Existence
08	— KESHE FOUNDATION NEWS	The Real 3 rd Eye
12	— KESHE FOUNDATION NEWS	Stealing from your own soul
16	— KESHE FOUNDATION NEWS	Collision of Galaxies
18	— KF SSI EDUCATION	Lesson Plan: Hydrogen, Deuterium, Tritium
20	— PLASMA PRODUCTS	GANS Capturing Kits
22	— LANGUAGE COMMUNITY	Your language
24	— PLASMA SCIENTIFIC JOURNAL	Field Interactions within Plant Tissue
38	— PLASMA SCIENTIFIC JOURNAL	Growing Nutritious Food Using GANS and its Benefits
58	— TESTIMONIALS	Washer Detergent Ball Experiment
60	— JOIN US	Host Wanted ABC of publishing in Plasma Scientific Journal
62	— COVER	Books – Amazon Kindle

Glands : Converting Carbon-14 to Deuterium

263rd Knowledge Seekers Workshop
<https://youtu.be/5G8N1D178?t=2233>

It works that way, in a lot of structures in the body of the man. In space, when you absorb Carbon-14 from environment, in converting it to the energy of Carbon-12, you can feed the physicality of the man. And with this, exactly the same as your glands, converting the Carbon-12 in addition to anything else, you can create Zinc, Copper, Magnesium, Sodium, and everything that the body of the man needs.

This is what your thalamus and thymus in cooperation together, do. Presence of the high radioactive material that gamma rays, in the cellular structure of the body of the man, allows the division of the Carbon to combination of deuteriums. Each cell decides, what in that deuterium and how many needs to be. As it was assumed that the body of the man absorbs Oxygen through its lungs and then it converts it; the job of thalamus and thymus in conjunction with each other and the gland system - all it does, it splits all the Carbon energy, which comes in as an energy to all the lymph systems, through the line of connectivity of the Carbon, into batches of deuterium. And then each cell near and condition of it, converts it to what combination, how many of it it needs to structure Calcium, Phosphor, protein of any dimension - even immune system's cell energies. One of the biggest mysteries of the life of the man and existence of the man and operation of the glands of the human body, or what we call separation of division of anything, is understood. When you interact with such energy, in such a rapid way, all you need to do is very much is, create two layers within the gland and allow the material to flow (Fig. 1). Whatever it comes, from now on, is all deuterium released - this

is a point of conversion (Fig.1 - green area). Before here (Fig.1 - area A) can be anything. Here (Fig.1 - area B) is all deuterium. And here (Fig.1 - area C) when it goes into the body of the man in circulation of the application with

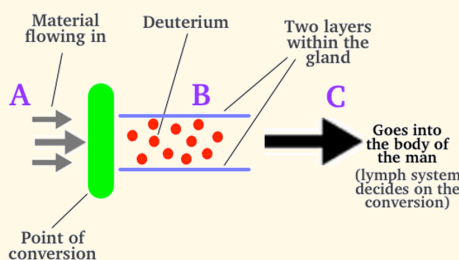


Figure 1. Glands converting any material to deuterium.

what we call the lymph systems, vein motion of the material, then this is what is needed, according through the structure of the lymph nodes and lymph connections. This decides here (Fig.1 - area C) it needs to become Copper, Zinc, and everything else. So you create a free-flow balance elements, which according to where they pass and what is needed, they deliver themselves as an energy pack to. It is not as an electron or proton, but it is the energy of literally a deuterium, that any cell can call upon according to what it needs. Now we understand the conversion of the energy within the body of the man, to structure - into plasma of, what we call, cell of the body of the man. This is

why the man in the North Pole - Eskimo - eats only the same meat day-in day-out but supplies everything which its body needs - from Calcium, to Magnesium, to every other element in the body. It is the common denominator division of the deuterium, which structures the feeding fancy of the body of the man. And as it comes to a cell of a heart, it needs certain combination of deuterium at certain strength of it, because all the deuteriums released are not of the same strength; then it becomes the energy to cell. And that is how easily energy is transferred, and every cell in the body of the man receives what it needs at the point it needs and it converts it to its own structure, to its own energy level. If man understands this, when you come into the dimension of the universal existence, which is the existence of the soul of the man, then the same operation applies to the soul of the man. The soul of the man is not just one thing, it is exactly the replication of the Sun. It has interactions, it loses energy, and it gains energy. And in that process, where it gains energy, it gains its energy from the spectrum of carbon-14. On Earth we converted everything to sugar-connection (CH₃), carbon-12. In the Universe, we have the same feeding frenzy for the structure of the soul of the man.



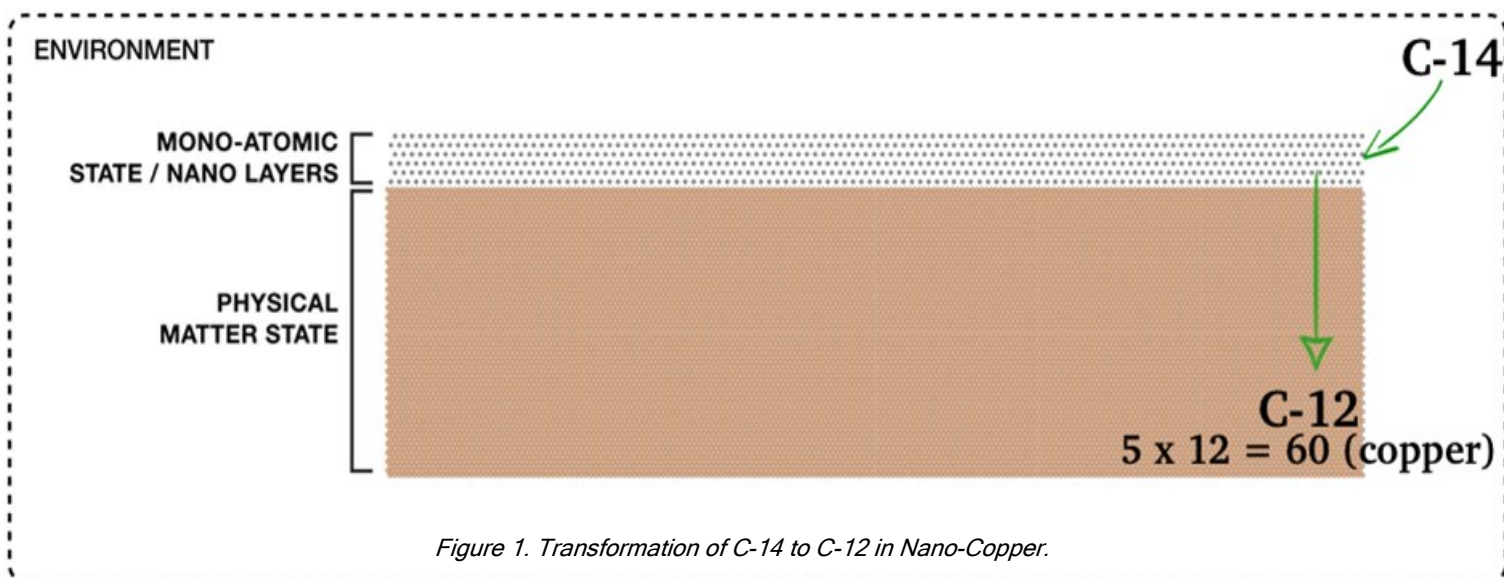
MAGRAV

263rd Knowledge Seekers Workshop,
<https://youtu.be/eSGu8NrDT78?t=1932>

THE CONVERTER OF CARBON-14

by Keshe Foundation

Remember one thing, which is the characteristics of Carbon, which we see in the matter state. Carbon is one of the best conductors, and at the same time Carbon in a different strength, is one of the best resistors we know as diamond. What mankind has to realize is that, this combination has a direct effect if you understand it in a matter state, in Nano state, or in plasma state. Because, if you understand this, the scientific world will realize something very, very simple. It is totally interconnected.



If man in the future becomes a little bit clever and goes deeper in the understanding of the flow of current in a conductive material, and understand why you have a 50 or 60 frequency Hertz in the Copper wire. Understand the position of Carbon-14 and Carbon-12 - then you understand, where the conductivity comes into play.

If you play with Carbon-12, very simple. Five times 12 gives you roughly the transmission of fields of the Carbon, or what we call the frequency of matter in Copper state. If you understand and you have worked with Nanomaterials, and you understand that Nanomaterials are space-gapped; and you understand this very easy, then you understand where Carbon-12 comes.

You can create a condition, that you can force the energy of Carbon-14 into the condition environment of Carbon-12 (Fig. 1 - green arrows starting from C-14). This is where your Magrav units have been playing a game, where you get your energy from. This (Carbon-14) has a characteristic in a specific combination of 56 (54 to 70). In some strength, you can pull energy the way you pulled energy from the environment, equal to the Carbon-12 in the Copper state vibration of the electrons. Then you can drain the Nanomaterials, layers, energy into your system, as a matter state electric currents - to what you call AC.

This is the feature of the new energy systems - self-sustaining - because you tap into the universal energy to feed into the matter state.

If you pick up your Nanomaterials, after you used them for a while and you touch them, they are not that oily, but you can feel the touch, you can feel the diamond

structure, the smoothness of it. In the inner layers of Nanomaterial, you create a magnetic field-strength of Carbon-14. Soon those who are in the electronics and want to play the game of energy understand this very clearly. It works that way in a lot of structures in the body of the man. In space, when you absorb Carbon-14 from environment, in converting it to the energy of Carbon-12, you can feed the physicality of the man.

When you have six deuteriums - depending in how they orient themselves - you become a resistor, or you become a conductor. The difference in the strength creates gap (big) enough that is too much to reach, and when you come to the other side you become too fast and you become a conductor. If you have worked in the, what we call the material world, in the structure of the diamond - as you have been to some of the teachings in the past.

You know that if you put certain amount of energy, or current magnetic fields through a structure of a diamond - the diamond flips and becomes a conductor for fraction of the milliseconds and it converts back to a resistor.

A super-resistor becomes a super-conductor under given condition. That condition is a confirmation of transfer of the energy of Carbon-14 to Carbon-12, where the orientation of the element transfers.

We always considered Carbon-14 to the lifecycle and length of the dinosaurs to man. We have never considered this is part of us, we carried, is with us. It assesses, it connects us, it is the link between us and the Creator and the creation of our own physicality. We got to understand when the Carbon-14 drops in strength, what does it become? It is very simple, it becomes Carbon. That is all that happens to it, with the release of his own energy. The only thing which happens in that position is the release of two neutrons.

In so many ways, if you even look at CH_3 and understand the energy brackets of CH_3 . CH_3 at a higher-order converts to oxygen. And this is what gives connection with the human body, between the Carbon-14 and Carbon-12. We are not looking at electron-proton bound of eight and eight, we are looking at the energy pack of CH_3 conversion. What does this allows man to do? If you understood this, and you understood the teaching of last week - very easy. **Man lives two parallel lives. On a C-12 plus energy pack, or lives with C-14 - connection to the Universal energy.**

This connects man to its physicality (Fig. 1 - bottom), and this connects man to his soul (Fig. 1 - top). This connects you to your children and your friends (Fig. 1 - bottom), because as a physical dimension

matter state of the GaNS, this connects you to the soul of your children and your friends (Fig. 1 - top). Mankind lives the two lives simultaneously at the same time, but because of the eye of the man, we have come to understand and rely only on the physical dimension. But this cycle (Fig. 1 - black infinity loop) still communicates.

This is what we call the soul of physicality, and this is what we call the soul of the man (Fig. 1 - bottom & top parts respectively). This is how you know your child is happy (Fig. 1 - bottom), or you know wife is not happy, but you understand the information in reality has come through the back door to here (Fig. 1 - top, green arrow), and confirm itself to here (Fig. 1 - bottom, green arrow), because these two (Fig. 1 - top & bottom) continuously exist in parallel.

Going into space and changing the dimension of the physicality of the man, which is Carbon-12 connected to Mr. COHN - the amino acid is removed. So now, man lives through the dimension of the soul of the man; and then when he appears, knowing that he has a

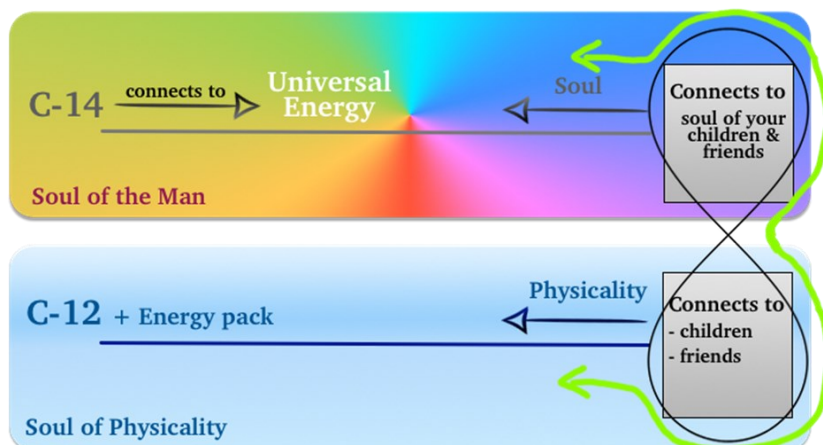
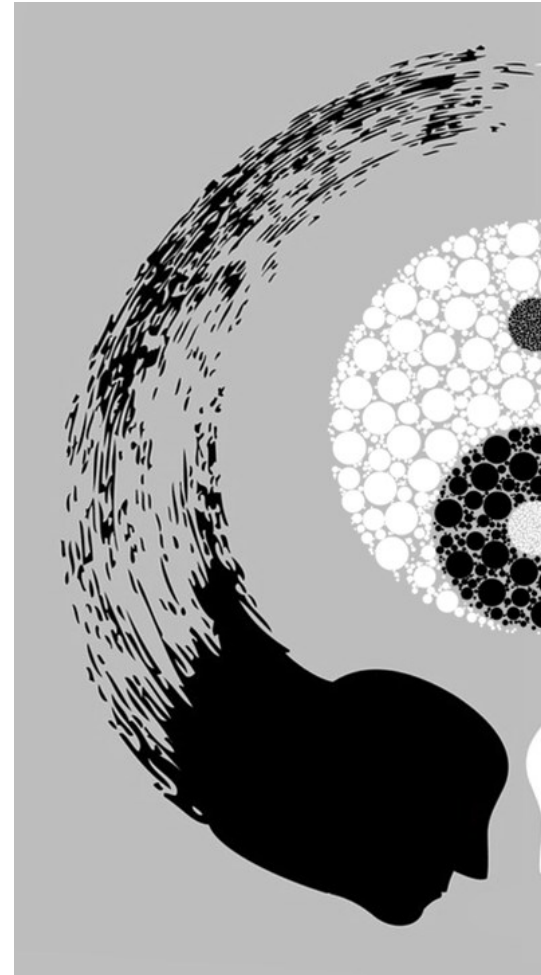


Figure 1. Transformation of C-14 to C-12 in Nano-Copper.

DUALITY OF

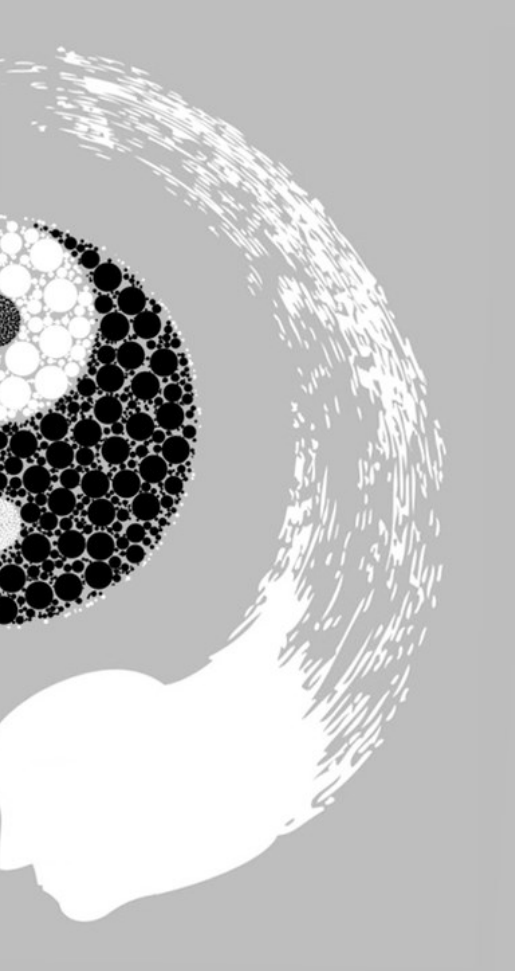


connection, one thing man finds out that all the creatures of the Universe, on this Universe, are connected to each other through energy of the Carbon-14. The way that every man on this planet is connected to every other man through the combination of the energy packs of this planet - what we call 'amino acid'.

What you have, if you carry the nitrogen and change the nitrogen in amino acid to another element - you will have a different blood color, you will have a different energy consideration and position. And in so many ways, if in the Universe

EXISTENCE

by Keshe Foundation



we put this Carbon-14 with any combination of the strength of the local environment we arrive in, it decides again that connection - to have a soul, or to create the soul of physicality, and with it, create the physical condition.

Now, you must have understood the importance of Carbon. It is through energy pack not matter state electron pack, which creates such a beautiful condition. The energy pack, which is what we call the Magrav energy of the Carbon in the Universe, has a specific characteristic, which was created

by the interaction of the magnetic field of any field forces and repulsion of any field forces. It is the intermediary; it is the balanced field force between the two field forces of the Universe. And so, if you condition it to some position, on Earth it becomes the amino acid and the mankind. If you condition it to somewhere further down the line, with a different strength, you become the man on the (planet) Zeus.

Remember one thing, which is characteristics of Carbon, which we see in the matter state. Carbon is one of the best conductors, and at the same time Carbon in a different strength, is one of the best resistors we know as diamond.

But you can create a condition, that you can force the energy of Carbon-14 into the condition environment of Carbon-12.

In space, when you absorb Carbon-14 from environment, in converting it to the energy of Carbon-12, you can feed the physicality of the man. And with this, exactly the same as your glands, converting the Carbon-12 in addition to anything else, you can create Zinc, copper, magnesium, sodium, and everything else which the body of the man needs. This is what your thalamus and thymus in cooperation together, they do.

But in all the time, and all the time, the Carbon which is, I always call it the Creator, is the strength within it, within the center of its ele-

ments' existence has an energy in gravitational magnetic fields, as the strength of the energy of the Creator. Then if you look, the sub of the sub of the sub of the sub of the sub - they all have one common denominator, but at the same time they all exist within, and in a way, through each other. The science and knowledge of Universe is very simple. If the man does not understand it, it becomes too complicated. But if he understands it, he has the first basic element of life to start anywhere in the Universe.

But what does have the soul of the man got to do with the physicality of the man? And how these two got trapped and entrapped in working together.

It is for man to understand how his existence, in the dimension of the interaction of the two field forces of the Earth and the Sun, by accident, totally by accident, has led to creation of Carbon, oxygen, nitrogen, hydrogen - which disconnected the physicality of the body of the man from the soul of the Universal Community and leads to the creation of the man. When the scientists look for life in other planets, very soon they will come to understand, that every life is and has connection to the line of the universal soul strength. You cannot do because it is created out of it.

Now you understand, what is now given to man. What is, if you can create dimension of the field of the Carbon-14 or its combination of the magnetic field spectrum - which souls and which dimensions of the Universe, which your soul is aware of their existence, they can communicate with?

262nd Knowledge Seekers Workshop,
<https://youtu.be/eSGu8NrDT78?t=1065>

When you have a star and it beats is so much nice as all the strengths that it can carry and no more. That heartbeat shows what it can do, what it possesses, what is made of, its signature. It is the signature of its existence, it is a signature of the strength of the fields which it carries are no more. When you speak on the microphone what you say is the strength of what you carry. the information and you want to give.

When you send certain frequencies of noise is that what you want to send? That is what the capability is. It is the same with a heartbeat of the soul of the man and the planet.

Every heartbeat dictates the strength, the position of the strength and in what capability it can work with it. In one of the ways that the body of the man has managed to interact with the soul of the man and in a way in the past we have called it **the third eye**.

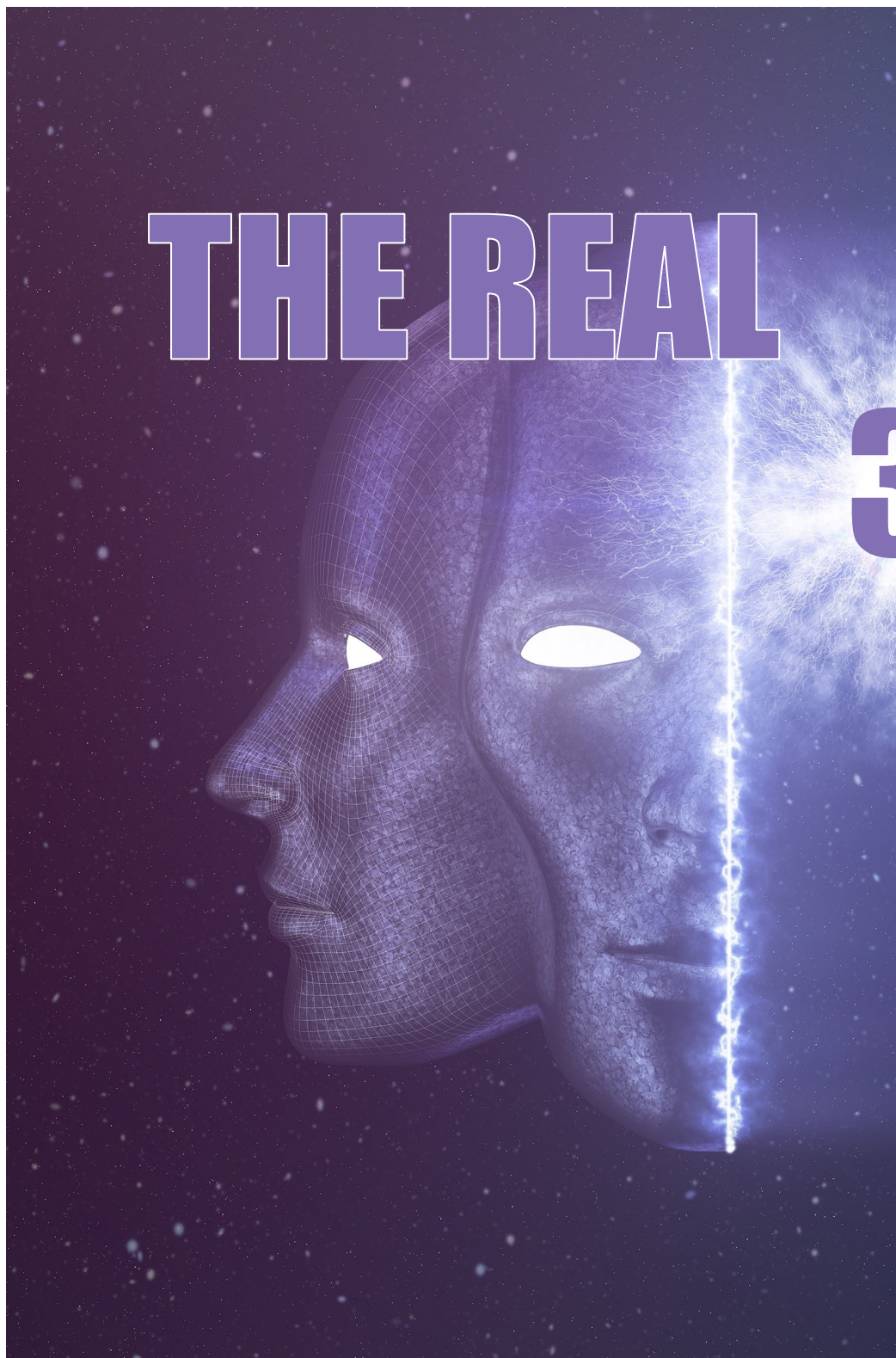
What is the truth about the third eye? Is there confirmation that it exists or is it in fact **the eye of the soul of the man**. As man could not understand the soul of man is within the physicality of the man. Now that we know the two eyes of the man or the eyes of the physicality, so the soul of the man has to have to same.

The eye which at the point of interface sees the same as the man and what it sees, it can share with the physicality at the rate of the same heartbeat. What does this mean?

Many of you know that when you are in the position of the physical rest you call it up, you entered the land of dreams. And you see with the physical eye but in fact there is no tangibility of physicality. In one of the recent teachings we opened this and we see it as application to

be opened up to the future point. When we share with one we share with a lot. We did not want to share this but as part of the teaching it was released so we bring the same position.

position like the dimension of the soul of the man to enter into the dimensions of the Universal Community, as it passes through the point and as the two eyes of the man are built to have exactly



If you look at the eye of the man and if you put the skull of the man, where the soul of the man sits when the fields of the soul of the man enters through the specific

twin stars in parallel, it leaves in interaction with these, some of the information as it goes back and forth between the Universal Community and the soul of the man.

And what the man sees in the dream is this information. This is why our dreams are physical vision to us. In fact, what we see as the information goes through

information transfers to the dimension of physicality and man sees it as a dream. This is the third eye of the man. In fact, it is the eye of the soul of the man.

dimension of the physicality of the brain of the man.

Now many of you might understand what the third eye means. What it means to be the actual soul of the man. It is the way, the line of the communication of the physicality of the man.

Picking up in a way like somebody is standing on top in the communication between the two powers and listening to the conversation between the soul of the man and what you call other subjects the mom, the dad.

But what is interesting, man only understands part of this communication which he has the knowledge of, not the other part which belongs to the communication understanding of the work of the soul of the man and its Universal Community. It has, and it lives, and it works through this way. There is no other way to explain it. For those of you who were looking to make the line of communication with the soul of Universal Community, we have given you the key today if you are mature enough to understand.

In reality this is the soul of the Universe where the rib of the Adam was the physicality of the man.

Now find any excuses or try to create the dimension to understand the work and the line of the communication between the soul of the man and its Universe.

When man understands this line of communication and become mature enough to understand this, man has entered everlasting peace. Then he feeds through this channel the physicality of the man and not for the man to kill to confirm existence in dimension of physicality.



by Keshe Foundation

If i can draw this as eye (Fig. 1 B) and this as a soul (Fig. 1 A) and the physicality of the man with his nose, as the information travels back and forth some of the

And when you look into the skull of the man there is a specific hole which accommodates this as the rest of the skull, the bone structure of man has locked the rest for the

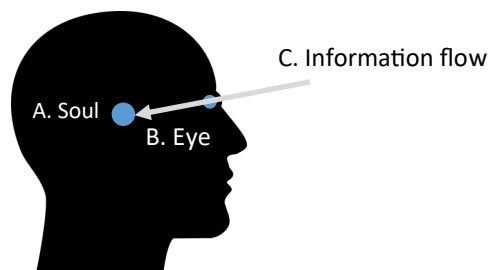


Figure 1. Plasmatic information flow

(RC) Does the Creator push the restart button?

(MK) We've done many times, it didn't work.

In so many ways today you have learned a new way to travel the depth of the Universe without the spaceship. But you still want to fight to have your factories. Would that elevate more man or would that put more man into the time of harshness of this physicality to stay longer?

Something very strange is that when a man comes to the point of separation he wants to stay longer. Why? For his physicality to abuse his soul more? Why we do not understand, when the time comes, we submit to it that it allows our soul to take to the dimension of Universal Community.

In so many ways mankind has a problem with a confirmation of his own existence. Mankind has a problem because he has never understood the twin life of the man. Mankind needs to be aware of what does it mean, what do we want from this existence, why can't we find peace?

In so many ways have we managed to find peace without actually working for it to understand it? Do we want to reach that point of peace or are we just talkers? Or now that we have shown the way would the man be mature enough to leave? What do we expect of this life for the man?

Or have we chosen the path of denial and we would like to say we are and we possess and we have and in reality we possess none we have none. Many of you will have problem in understanding the totality.

Many of you will have problem in developing to the next step. Many of you will have to come to understand the truth about your own physical structure.

Where I would like to take you is to show you how I have taught you in the past and now maybe part of the teaching comes together.

If you look at the skull of the man and its two eyes you will find out, going back to my old teachings, I said to you get yourself a stereo system to find the position of your soul.

And this is the heartbeat of the soul of your physicality. The passage of the man, if you look the nose of the man opening. The image of the interaction of the dimension of the physicality of the fields of the man goes the same way to interact.

This is why when this passes through the center it is just if you look at the skull of the man, where the nose sits and where the eyes are and the soul sits somewhere there (Fig 1 A).

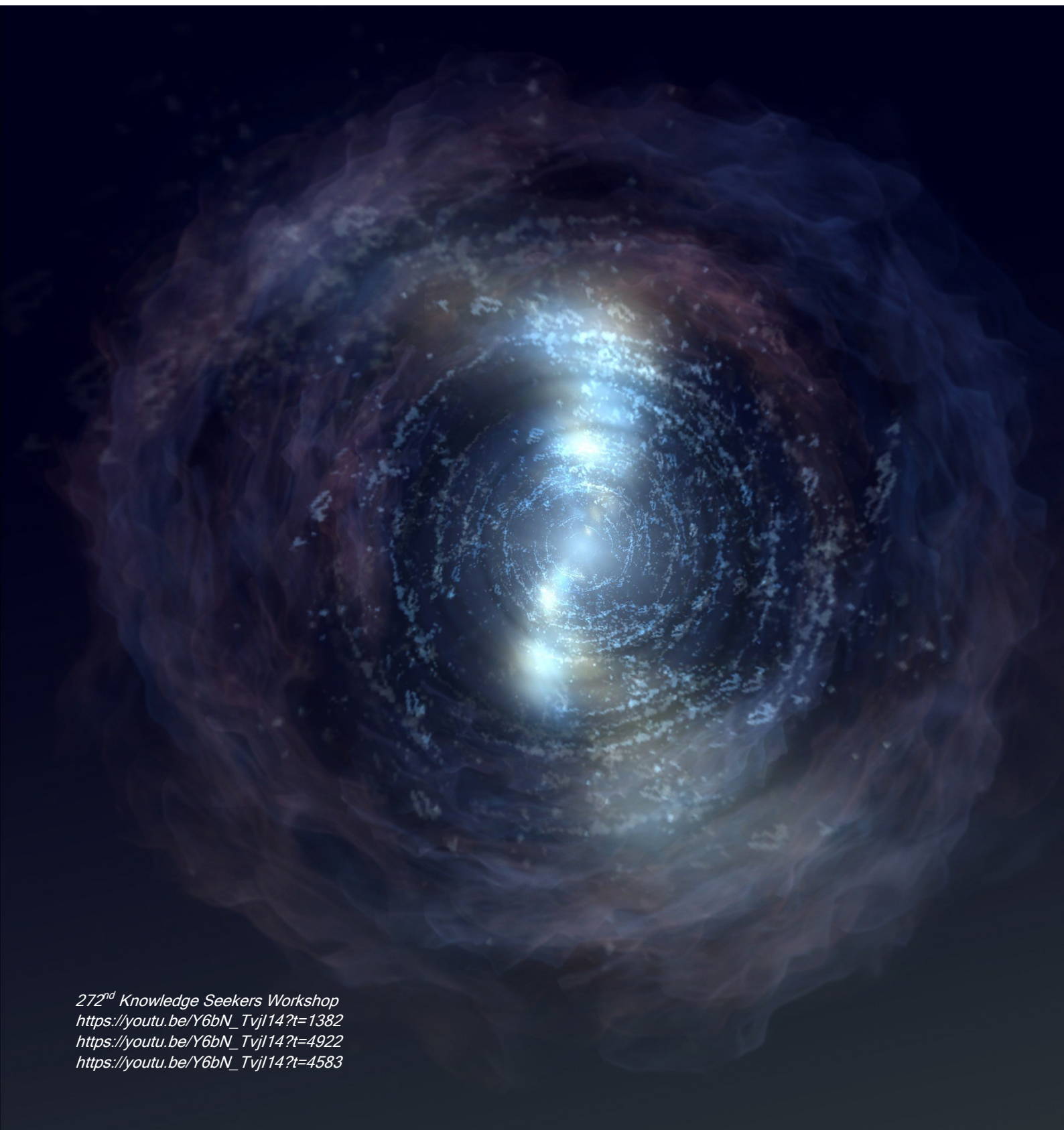
This is why the vision sees, the nose smells, the dream and the tongue speaks the language.

You remember the star formation and the free field plasma that all can take from? There is no difference in the teaching. This is why when you dream you smell and taste and speak and you hear.

Because is the dimension of the soul as it goes interacts with all. If you are looking for the third eye that is the position of the physicality of the vision. **If you are looking for the path of the soul, the transfer and the true third eye this is where you find it.**

That is why some people through reading can collect energy because it comes by the passage through the soul of the man which feeds the physicality of the man. This is where your breathing passage sits, and this is exactly where your soul sits.

This is the position of the soul; takes energy from the dimension of the gaseous part of this planet this is why the nose is positioned there. This goes to feed the heart of the man once he is balanced, his energy with the soul of the man. This is why the two heartbeats work together.



272nd Knowledge Seekers Workshop
https://youtu.be/Y6bN_Tvjl14?t=1382
https://youtu.be/Y6bN_Tvjl14?t=4922
https://youtu.be/Y6bN_Tvjl14?t=4583

When you travel in Africa you see on the side road of the streets, main roads or anywhere else piles of everything. Melons, plant pots, no one touches. Because men understand the condition of the peace. I steal I stolen from my soul.

You put the same plant pots in the same soul in the most advanced nations of the world, in the center of Liverpool, it will not be there in one second. This is what man has to mature itself to. Africans have matured to that level. But the white man still thinks he is too clever stealing from the physicality and the soul of itself. Every second in European countries number of cars are stolen which means you take from the soul of the man who has given so much to possess it. It has put his life and soul in it. Not one watermelon gets touched on the streets of Accra. This is what I say, you have to create condition of peace for the dimension of the soul of the man and then you understand. Peace within the soul created by the world leaders for their Nations brings peace for the rest of humanity.

I had the pleasure and the joy of walking through forbidden city of China very recently. And I had the pleasure to witness how the correct conduct of a nation leaders create a peace within the nation. There were tens of thousands of people. If you have ever been to Beijing and you walked to go to see the Forbidden City. People come from all walks of the life to see the beauty of the culture. In a crowded path on top of the stairs I noticed a backpack with a beautiful young girl wide open. Ipad, laptop, with the zip opened.

And on the back. She was busy with her phone I said to the knowledge seeker, I said to tell her to close her backpack people will take and I was made to a shame.

She says no need. The girl which had the backpack says nobody touches anything here. The country is safe. I am safe. Nobody will put a hand in my backpack. And then I enjoyed how peaceful the nation is. At the same time sometimes ago I was standing on the Central Station of the Belgium, train station, to get the train to the south of Belgium. I saw a Belgium unzipping a korean's woman's backpack and putting his hand in. It's the nature of the nation. I said to him what are you doing? He said nothing to do with you, it is not yours what I am stealing is it?

In a nation that has peace by its nature people have the confidence they can leave everything at reach. Creating the condition of peace has to come through the leaders of it that gives the condition for peace for mankind. Then through that, man will find the peace through his heartbeat, through the heartbeat of the soul of the man and man enters the Universal Community.

Why does man have to wait until it dies, until achieves a freedom of physicality? Where man can find that in the time of his physical existence. And then extend the life of the man to everlasting. This is why we see the growth and prosperity of a nation because the nation is becoming at peace with

itself. The leaders of the nations have to create the condition that its citizens finds peace, that through it they find a peace between their souls and their physicality and in totality mankind enters and becomes part of Universal Community, as the man already is citizen of a spaceship called Earth in the span of the Universe. When you have misguided leaders, you end up with misguided citizens.

Stealing from

And then you find every word to find justification when a misconduct of the physicality of the man to confirm "it is my right to have". The greed of the man has to understand the position of the soul of the man, the heartbeat of the man and be content with achieving peace within the physical structure of the man.

These are not sermons, these are the teachings which the man needs to enter the Universal Community to find peace on this planet. When a number of you reached this point, that the magnetosphere of your conduct of your souls in finding peace reaches the others of the same strength across this planet, then the planet shall glow and with it will enlighten the rest of the soul of this physical existence.

Then man enters peace for all creatures and not only the mankind. Through the soul of the man you feed the soul of the plant, the fish, the lion that through you they receive, they shall not kill.

And this is the wisdom of the time.

Tomorrow for those of you who are the path of believer of the Christ, bless his name, you celebrate that freedom. But though the force separation of the physicality, the heartbeat of the man from his soul. You called the crucifixion of the Christ. If you look this is symbolic. The crucifixion of the man soul in the dimension of his physicality does not matter what land, were from, which color,

become part of the Universal Community or do I chase in the path of killing that I can never achieve that.

Many of you remember, I have mentioned this many times. The men who think design of the bullet and the man who fires the bullet as they caused the suffering of the separation of the physicality of the man of his heartbeat and the heartbeat of his souls before

reaching the natural process.

They all

have to pay for. So is those who betray. And they justify, try to justify. You betray a physicality from its soul, the whole lot have to pay. This shall be same with one or the other, does not need justification.

The process of peace in a way has started as of today. Before starting of the day today I have written many words. In so many ways is to start the kindle of the peace between the heartbeat of the man and the physicality dimension of the universal. And it is for the maturity of the totality to reach and receive and not for one to think "I am".

You looked for spaceships, you looked for GANsEs, and you looked how to get to your soul. Now I have given you the key to the freedom of the soul to reach the soul of Universal Community and through that, the way you watch what is happening on this planet through the eye of physicality, through the eye of Universal Community you will see the whole image of the creation,

even the Creator. It depends what you set your vision to. You want to set your vision to thieving and killing then stay with the heartbeat of the man. You want to set your vision to seeing the soul of the Creator, understand the connection between the heartbeat of the soul of physicality and the heartbeat of the soul of the man which is already tuned to the soul of Universal Community.

It is for man to choose the flight system. And that depends on the maturity of the man himself, nothing else. This is what I have always said. Man will take from this knowledge according to his intelligence.

Where does the intelligence of the man comes from? Do I want to be on a donkey of the man or do I want to be in the dimension of the soul of the Universe? You do not need no aircraft, no jumbo jets and no spaceship.

Now we understand why the teaching of today is one of the most crucial teachings of the time. Because for the first time you understand how to tune the heartbeat of the man to harmonize with the beat of the soul of the man, that through it the soul of the man will take the physicality of the man to Universal Community and that choice is yours and no one else's.

Contemplate and understand the teaching of today. Then you understand mankind has entered a new phase as of today. It is become harder and harder for mankind to find to justify new ways of mass killing each other.

your own soul

which race, which path of belief, there is a soul free to complete the first sphere of the totality of the peace for mankind to kindle the light of peace on this planet.

That soul has been here for a long time. Needs the correctness of conduct and peace with those who understand they can reach, that they have access to it and can create a condition for kindling the first light of peace on this planet. The burden of responsibility is huge but understanding of the truth needs the understanding of the truthiness of the man to himself and no one else.

It has been my job to bring the knowledge and many world leaders have start listening and creating the condition for the spread of the knowledge. Many of you have earned and yearned to have and now you understand where to go to. In so many ways if I changed my breathing, would I change my heartbeat that it tunes to my soul that I can achieve the dimension of awareness and

As more and more have matured and become mature. But in so many ways, is mankind ready to become mature, to find peace, that through that peace it becomes the source of life for all those who exist on this planet?

The difference with the son of man is that is made of the same amino acid as the rest of the creation of this planet, so it is already in tune. The Sun cannot feed the soul of the man as it has to interact with the heartbeat of the physicality of the man, where the soul the physicality of the man through the soul of the man has already made of the conversion.

The beat of the soul of the Sun is that much higher frequency as you or the strength, but the soul of man has already downgraded to the level that it can reach every other creation of this planet.

As the leaf, the fish and the physicality of the man are all made of the same amino acid. I call it Mr. COHN and maybe you understand. It is a very nice Jewish name because it's very stingy, it likes to hold on to everything. The hand is the source of life for the totality as it is at the strength of the totality.

Now you understand how even the soul of the prophet of the past has shared with the soul of the man. Now we extend that sharing to the totality of all the souls of the creation on this planet and through it to the rest of the Universal Community.

The world peace is for the first time at the grasp reach of the man. We raise through our souls the soul of the world leaders to change to that, then rise to teach the mankind how to find a path.

Through it to find peace on this planet that the totality of the creation on this planet can let Universal Community to be part of, not to fly to become part of as you already are the passengers of the spaceship of the Earth.

"You would like to confine your physicality into a smaller dimension, you would like to live in a submarine you are quite welcome. You would like to live in a tin pot and call it a spaceship you are quite welcome. You like to sentence yourself into a prison of space and time of yourself you are quite welcome.

We have given you the freedom of the Universe. It is you who has chosen the prison of the Earth. We still build factories for you to be . else because this is the condition of it. We still will be in everything else that you all can survive in the physical dimension but is this our purpose? Not really. Not mine. "

272nd Knowledge Seekers Workshop
https://youtu.be/Y6bN_TvjI14?t=587
https://youtu.be/Y6bN_TvjI14?t=3033
https://youtu.be/Y6bN_TvjI14?t=4244



fly away!

Collision of the galaxies

by Keshe Foundation



You see what we see here on the screen it is very interesting. Maybe you understand it. This is a collision of two galaxies. And if you look...

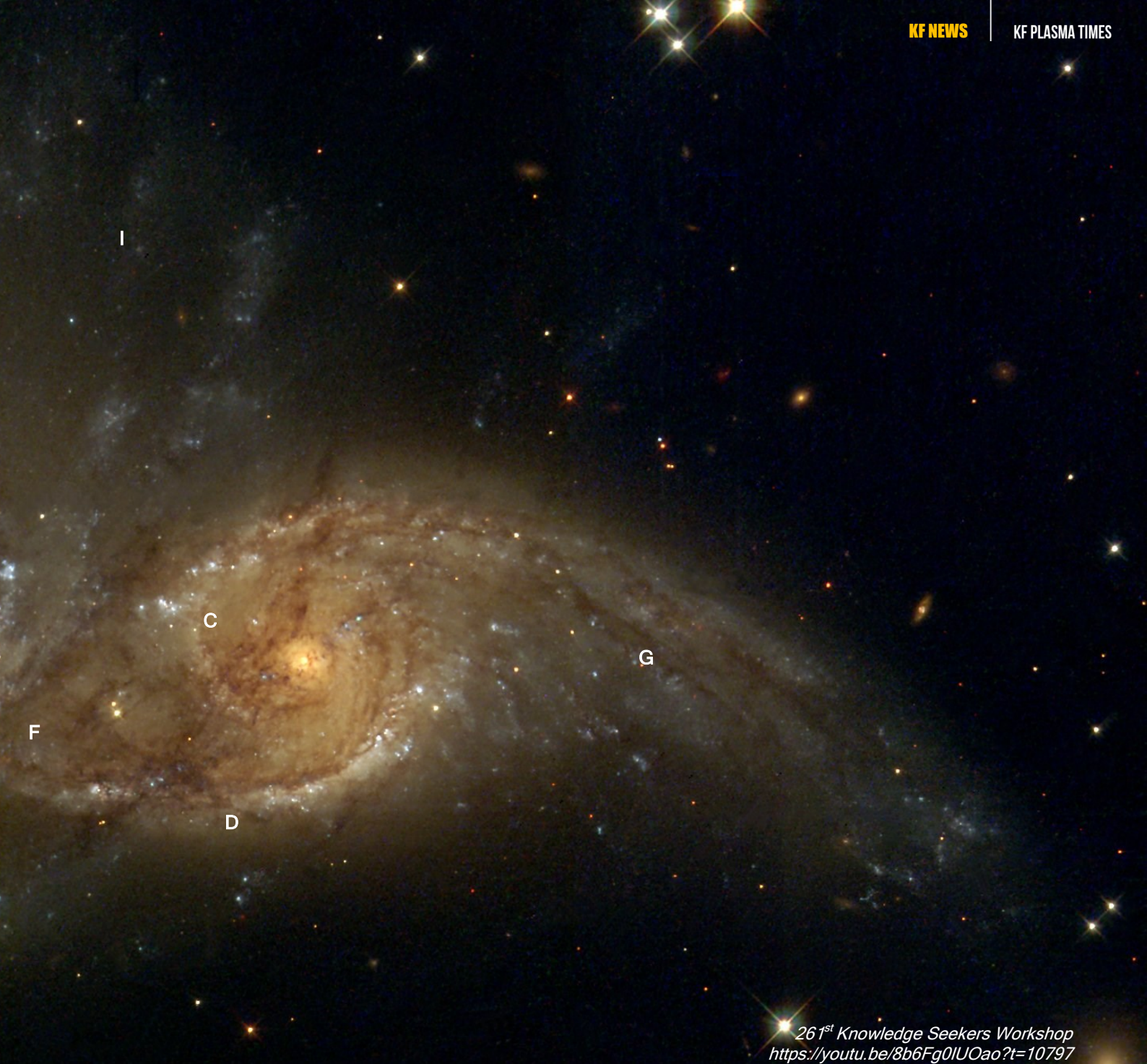
If you look at this, this is a beautiful picture if it is real, if it is taken from a real dimension, if it is not... but I think it is. You will see very interesting pattern. Look at this field, (A) you look at this field, (B) you look at this field has actually used to have a picture like this (E). You will see a very interesting pattern. This is this field (C) and this is disturbed with this here (D). You look at the size of the small one and you look at the size of the bigger one.

A very powerful star is pulling its twin sister in. It has absorbed enough energy.

You see at the point of entry; the magnetic fields are very much disturbed here (E). So you can understand how this disturbance of the fields here (F) and attained this way (G) tells you that this is head on. What is going to do, most probably in billions of years the smaller galaxy will enter the bigger galaxy. It is here.

When it enters, because of the compactness of these wings, it will go in straight away. It reaches the point of critical absorption.

The creation of this third field here (H) which you can see coming in gives you a very good indication that the galaxy is under pressure. You see disturbance of the fields (I). You see tail of fields (G).



261st Knowledge Seekers Workshop
<https://youtu.be/8b6Fg0IUOao?t=10797>

The effect is so much that you see disturbance on this side of the field of the galaxy (J). What will happen most probably it will not be much. What is going to happen, the galaxy will not be destroyed. The mother galaxy will stay.

This galaxy will come to absorb. The field pressure increases. Most probably the wings will open up. At the same time what is going to happen, the extra fields mass which is added to it, it forces it. You can see the direction, if you look at it very closely and understand the pattern of the work of the fields, you will see what this thing is going to do to each other. What the pattern is going to be and very simply you can see a clear

indication. The small galaxy when it goes in, this is the direction you will get a new galaxy (K). In a way you can see where the fields will open up. You see a lot of disturbances. The whole galaxy pattern of fields is disturbed. In so many ways you can see this in millions of years, it will open up to creating and it stays the same. The compactness of the wings shows the strength of it. At what position the galaxy is working.

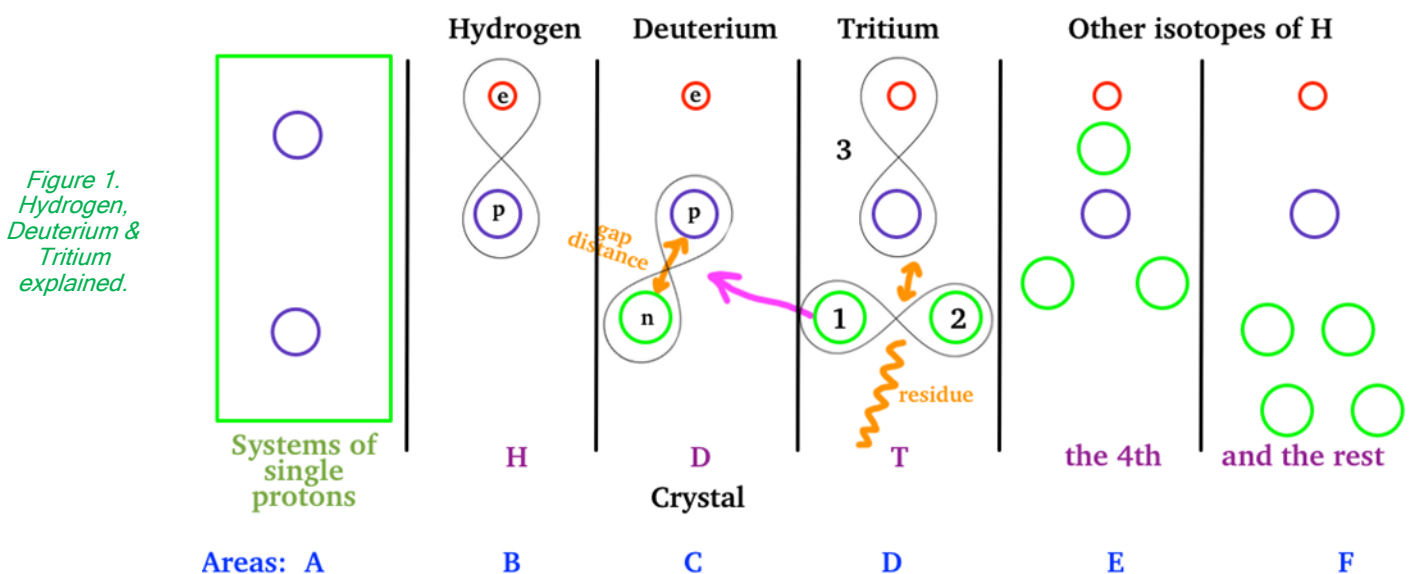
You see the fields are outside the pattern of the mass (J) You see the fields being the tail end of the mass (G). And you see very simply, the first wing of the galaxy has opened up (D-F). So when it comes in, it has opened up. It is on its way in. Then when you are traveling would you like to go through this and stand massive changes and play with your life? Or you choose to touch our magnetosphere and going that way.

HYDROGEN, DEUTERIUM, TRITIUM

by
KF SSI Education

Lesson Plan: 15-20 min

If you carried Nitrogen into the space and then at certain given points you enter a space in which Nitrogen becomes balance thing - you have no Nitrogen - then what happened with the structure you had with the Nitrogen? In the space the only thing, which stays more or less constant all the time is **Hydrogen**. Actually, it is **deuterium**, not even the hydrogen. The most balanced system in the creation of flexibility is **tritium**. Very soon, as we are going into the phases of the deep space travelling and man will learn. Passengers of these crafts will never be ill. Illness is something which does not exist in those conditions.



It is the matter of the man because of the physicality. We do not have any hospitals, we have no doctors, because the environment of the spaceships is balanced to give and take whatever it needs. People as you go through it, it balances you with all the needs. And all materials of it is one thing - is Hydrogen. Let me explain what I mean by Hydrogen. This is very important. This is another part of the knowledge we have to understand.

What we call Electron and what we call Hydrogen? Hydrogen is a Proton. There are number of different Hydrogens that we still do not consider. A Hydrogen we consider as Electron and a Proton (Fig. 1 - Area B). To us, this is a Hydrogen. This is what we call H. Then we add one Neutron to it – this has become deuterium (Fig. 1 - Area C). Then we add another second Neutron to it – this becomes the tritium (Fig. 1 - Area D). We have the fourth and the rest (Fig. 1 - Area E&F). These (further isotopes of H) man is not aware of yet, as such.

We have the same proposition. We have systems, which in fact, is a single Proton - without any Electron. But it matches with another Proton - still a Hydrogen (Fig. 1 - Area A). The total understanding of this is very simple. It has to match, energy-wise, as this (Fig. 1 - Area B - the infinity loop around 'p' and 'e' of a single hydrogen).

This (Fig. 1 - Area C - the infinity loop around 'p' and 'n' of a single deuterium) has created a very balanced system with an Electron, which allows the closeness or separation of these two ('p' and 'n'). The system stays stable, but the proximity of this Electron dictates the gap distance (between 'p' and 'n'). And if you understand this, in the world of physics, this is the basis for crystal structure.

This is the essence of crystal structure; this is what all there is - the space gap.

Tritium is a totally different. Tritium is a combination of the two in balance - a twin star (Fig. 1 - Area D - the infinity loop around two 'n') - with the existence of attachment of a third Neutron (Fig. 1 - Area D - the infinity loop around 'p' and 'e'). Because these two (double Neutron system), see this ('p' + 'e') as one unit to them. In fact, you create a triple system (star-formation). Which means, if you understand it, like this. Where this is 1, this is 2 and this is 3 (see number 1-3 in Fig. 1 - Area D). And every time these two play this game (Fig. 1 - 1&2 play the game of deuterium), but every time this set (3) come closer or find a new position, then it squeezes energy out of this (1&2 pair). The rapid strength in combination with the rubbing of the energy with this, it creates residue. That is why tritium is a radioactive material.

If you remember, one of our friends did this - two dynamic reactors and he introduced the third one. As he introduced it, he started producing material - rubbing off the fields. This is the same position, but because in a way, it is three neutrons together - radiation is the reason. This is how in nuclear reactions, in atomic structure reactions, we enter tritium and we look at it as one entity Proton. This locks into it (Fig. 1 - 1&2 locks into 3) and then with it, if you put Mercury with the tritium - because of this behavior - in absorbing another Electron, it leads to the creation of Helium. So now, **you create Gold out of Mercury**. This is the latest system's works.

If you go in a deeper space understanding of the totality, you come to other types of Hydrogen, which is one. But one thing you will find out, is that most of these (Fig. 1 - Area E) allow such a strange behavior, where the Proton moves into the center. These we cannot produce them on the atmospheric condition of the Earth, but in space, we see a lot of them.

Q&A: 3-10 min

(AB) Mr. Keshe, tritium is, actually a hydrogen with two Neutrons dancing around it, isn't it?

(MK) I have never seen them dancing. The two Neutrons are in a twin set.

(AB) But then, there are Hydrogen. I mean the Electron and Proton make the Hydrogen, which is there - which is marked with red and blue. Actually, that is the Hydrogen and you have the two Neutrons as a twin.

(MK) Yes, that is why you get radiation from tritium. Tritium is one of the most highly dangerous things in the nuclear physics industry. It is a level of fields which they interact. It is just like those two running and then with the Hydrogen element you are just grinding the stone. All the sparks you see, this is why it is so radio-active. Because it is two twin systems, but one in fact being a loose twin. Because the Electron, Proton rotates in a double direction, not in a single direction. Once it is trying to create a balance between the Electron and the Proton, and then the whole set is there to create balance between the two Neutrons. That is why it is very active and this is why we have a higher value. Because it releases continuously grinding of fields together and radiation. **Hydrogen is alkaline, Deuterium is crystalline, Tritium is acidic.** And if you know how to use these as a fuel...

We come to the point that we need to understand why the elements are there. I teach this especially for Dr. Rodrigo and those who understand **the next step of the field system**. Because, these fields and their interaction, are paramount to the work of the Universe - to the work of, if you consider, the body of the man as a Universe. The energies, the balance of the energies, the communication of energies, the production of the material through energies. You don't need anything more than the tritium, deuterium and hydrogen to create every element in the Universe, in a plasma energy level, not in the matter state. Because then you have to try another thing to convert the energy as a plasma to a matter-state of plasma.

(RV) The hydrogen that we use here, is using a CH_3 ?

(MK) Extracts of CH_3 , but there is easier way to do and in this morning's teaching I taught how to do it.

[source: Blueprint for Peace for Humanity Day 8 PM session]

From 49min 24sec till 1h 09min 25sec

GANS CAPTURING KITS

/ Million of Suns in one container



KF SSI Plasma Capturing Kit

The package contains:

- 1 X Iron Chicken Wire
- 2 X Pure Zinc Plates
- 1 X Nano-Coated Zinc Plate
- 1 X Bare Copper Coil
- 3 X Nano-Coated Copper Coils
- 4 X Crocodile wires
- 4 X LED
 - White for CO₂
 - Blue for ZnO
 - Yellow for CH₃
 - Green for CuO
- 4 X Syringe
- 1 X Gloves
- 400 gr salt

NOT included in the kit:

- Plastic containers - 4 liters
- Demineralized water
- Power supply -battery or DC regulated power supply
- Paper clips/wire to keep the plates and the coils in place.

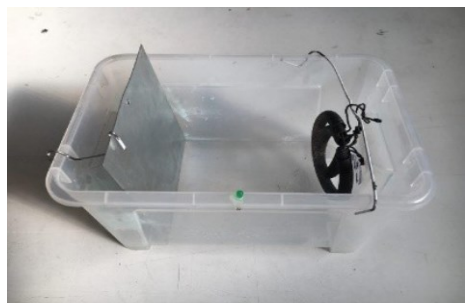
Instructions for assembling the capturing kit for CO₂ GANS production

1. Unpack all the components from the package.
2. Use gloves when you are handling elements from the package - especially the Nano-coated coil.

3. Place the plate and the copper coil into the plastic container, placing the led on the side of the container.

4. Take one wire, clip the zinc plate so that it makes a solid connection between the plate and the wire. Do the same for the Nano-coated coil.

5. Connect the two wires from the plate and from the coil to the power supply that you have. The kit can also be used without a power supply, but the process will be slower. In such case you can use a battery or the LED provided.



6. Prepare the salt water solution. Filter salt solution with coffee filter. Pour the salt water into the container. Water should be about 1.5 cm below the top of the plate and it should not touch the wire connections to the plate and the coil.

7. After a few days CO₂ GANS will be collected at the bottom of the container. Extract these materials with the syringe from the bottom of the container and put them into a smaller container. Always use gloves when you are extracting and handling GANS material.

8. After removing the GANS from the container, add salt water so that the level of the water is the same after extraction.

9. If the production stops, you can exchange the salt water with a new salt solution. You can also repeat the Nano-coating process one more time.

The Nano-coating process is shown in the video which has also been published here:

https://youtu.be/_rQtXFD2Br8

Together with the KF SSI Education - Nano Layering Process

https://youtu.be/U7YG-vMm_q8

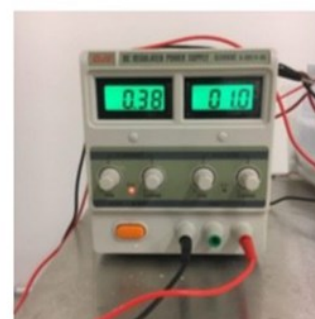
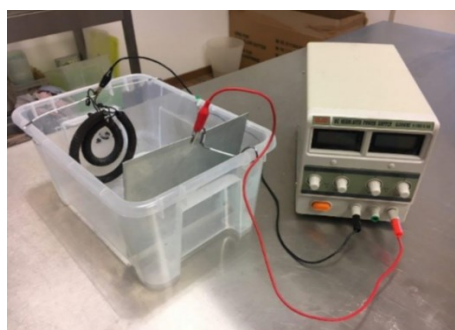
Using the components provided in the package you can make different types of GANS, by following the same method as for the CO₂ GANS production, only using different combination of plates and coils. This table gives an overview:

IMPORTANT: When you produce your different GANSes, keep a distance (at least 3m, best 5m) between the different GANS-container. The closer the containers, the more you get a mixture of different GANSes. Keep in mind that, through the selection of your different metals, you create a "magnet", which attracts the fields from the environment.

GANS	Color	Coated Material	Uncoated Material	salt content
CO ₂ (ZnO + CO ₂)	cream white	Nano-Coated Copper	Zinc	3-10%
ZnO	white	Nano-Coated Zinc	Zinc	3-10%
CH ₃ (FeO + CH ₃)	reddish brown	Nano-Coated Copper	Iron (chicken mesh)	3-10%
CuO (CuO + Cu)	turquoise	Nano-Coated Copper	Copper	3-10%

WARNING:

Do not scratch the surface of the nanocoated plate. If you are using an external power supply for the GANS production, please do not use a voltage over 1.2V. Keep out of reach of children. The materials must be disposed of according to the laws of the country in which you are located.



ORDER YOUR

**GANS
CAPTURING
KITS**
TODAY!

Available on:

store.keshfoundation.org/store



KFSSI CO₂ Set Nano-Coated Copper & Zinc Plate

The package contains:

- 1 X LED
- 2 X Wire Extensions
- 1 X Nano-Coated Copper Coil
- 1 X NOT Nano-Coated Zinc Plate
- 1 X Syringe
- 1 X Gloves

NOT included in the kit:

- A plastic container - 4 liters
- Demineralized water - 3 liters
- Non-iodized salt - 150 gr
- Power supply -battery or DC regulated power supply
- Paper clips, wire to keep the plate and the coil in place



WHAT IS YOUR LANGUAGE



∞ WRITE TO US ∞ T

∞ JOIN THE STUDIES IN YOUR LANGUAGE ∞ TEACH

∞ SHARE WITH THE WORLD ∞

<http://keshe>

COMMUNITY WORKING ON?

TELL YOUR STORY ∞

FURTHER THE NEW KESHE PLASMA KNOWLEDGE ∞

∞ MAKE YOURSELF HEARD ∞

.foundation

Author: Jim MacDonald
Published on: June 2019

FIELD INTERACTIONS WITHIN PLANT TISSUE

Overview of Experiments

- ⇒ Comparing Daikon Radish grown with Plasma against a shop purchased Daikon Radish
- ⇒ Daikon Radish grown in the Environment of Plasma Only
- ⇒ Comparing Cos Lettuce grown with Plasma against a shop purchased Cos Lettuce

A VISUAL REPRESENTATION USING CIRCULAR CHROMATOGRAPHY OF PLANTS GROWN USING GANS

Introduction

This paper is the follow on from “Nutrition in Food - Using GANS and its benefits”

The author's experience in using the GANS over the last three years is that when you compare produce grown with GANS to produce not grown with any GANS, visually it looks the same and so from a consumer point of view they would not know the difference.

However, from a nutritional point of view the nutrition is higher in the GANS treated radish and the shelf life of the produce lasts a minimum of three or more times longer in your fridge [1]. On visual inspection, the produce grown with GANS can look the same as produce grown without. However other properties have been observed, those being, higher nutrient content as well as longer shelf life. Therefore, it was investigated whether the method of using the circular chromatography could be used to visually show these properties in produce grown with the GANS.

Ehrenfried Pfeiffer had originally developed this method to evaluate the life in soils. A quick and easy test to determine how healthy your soils are. It's a way of assessing your soil for humus, minerals, microbiology and more. Most of the work was done to analyze soils, with less analysis done on plant materials. The analysis is not an exact science, but rather an interpretation by the observer.

The purpose of Circular Chromatography is to allow the separation of the different organic components that make up the plant matter or soils that are tested. The separation of layers is from the centre to the outer edges of your filter paper. By using Silver Nitrate, you are essentially taking a photograph of the essence of the plant in its interaction with the Silver Nitrate. This interaction is visually shown with different patterns and colours that develop on the filter paper as it is exposed to the light.

Materials and Method Used

Prepare a solution of Silver Nitrate

Mix 0.5grams of Silver Nitrate in 100ml of distilled water.

Preparation of circular filter paper

Place a 2mm diameter hole in the center of your circular filter paper. Cut a 2cm by 2cm square piece of filter paper and roll. This becomes your wick. Place the wick in the hole in the center of your filter paper. Allow the wick to stand in the solution of silver Nitrate - as depicted in Fig 1.



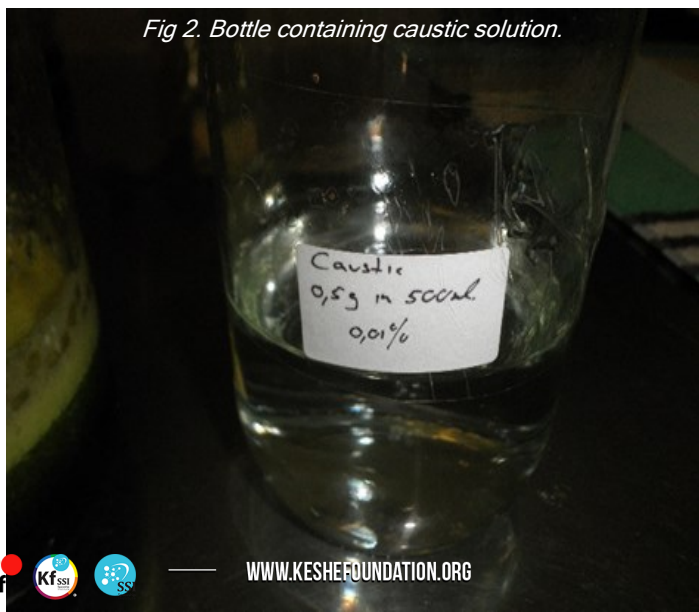
Fig 1. Wicking of filter paper with Silver Nitrate.

Through capillary action the solution is absorbed through the wick and spreads out in a circular pattern. Allow the Silver Nitrate to spread to a radius of 4cm. Remove the wick and allow the paper to dry.

Preparation of Plant Material for testing

Add 0.5 grams of NaOH into 500mL of distilled water - Fig 2.

Fig 2. Bottle containing caustic solution.



Weigh 50 grams of plant material (Fig 3). Pour the 500mL of the weak caustic solution into the jar containing the plant material. Use a stick blender for several minutes to break down the plant material.



Fig 3. Bottle containing 50 grams of radish plant material.

The plant material after mixing with the caustic solution is shown in Fig 4. Let this solution sit for 1 hour before using.

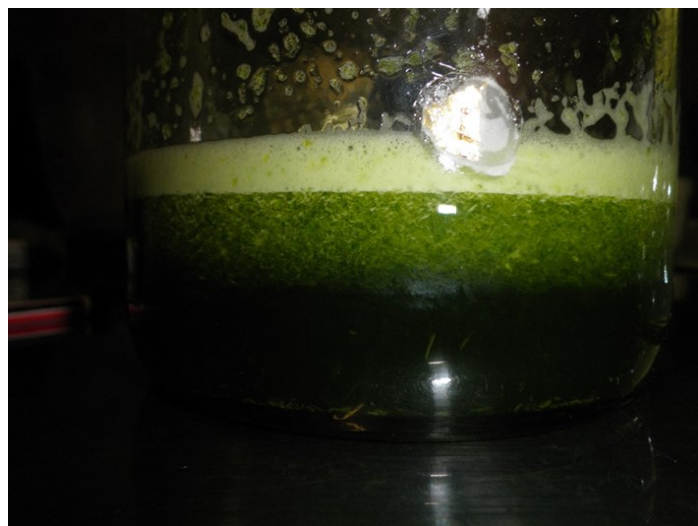


Fig 4. Bottle containing caustic solution and plant material.

Creating the Chromatograph

Place a new wick into the centre of your filter paper that was imbued with the Silver Nitrate. Place this over a small dish containing the plant mixture, ensuring the wick sits in the solution to allow the wicking of the plant solution - as in Fig. 5 & 6.

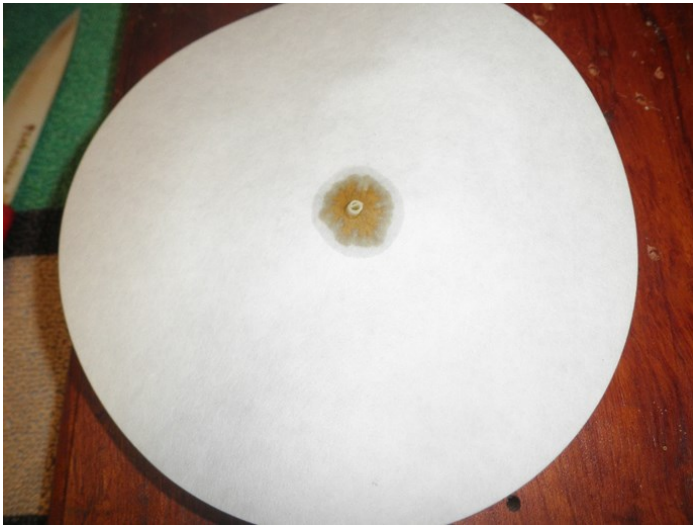


Fig 5. Filter paper in plant solution.



Fig 8. Filter paper drying.



Fig 6. Filter paper in plant solution.

Allow the plant solution to spread to the 4cm radius mark on your paper (Fig 7). This may take up to 30 minutes.



Fig 7. Spreading of plant solution from centre out.

Remove the wick and allow the paper to dry in indirect sunlight - see Fig 8. The drying can take several days.

The Chroma's have been made ready for analysis and interpretation.

Plasma Science understanding of this technique and how it can be applied to visually determine the health of the food and the nutritional quality of the food that is grown.

Plasma understanding teaches that to create a Nano-layer on copper plates, it needs to be exposed to a caustic environment (NaOH). This sodium (Na), environment allows the Magnetical and Gravitational fields of the copper to open up, creating a space gap between each atom, thereby creating the Nano-layers. Using these plates in another salt environment (NaCl) allows the Nano copper to open more and become a GANS or plasma of copper. This same principal is applied to this method. The plant is already in a GANS state. The structure of the plant, the different amino acids, proteins, plant sap are all held together by the interaction of the Magnetical and Gravitational fields of the different plasmas. By blending the plant to break it down and exposing the plant material to the weak caustic environment in the solution, the bonding between these different proteins, amino acids and cells is weakened. When this solution wicks up and spread out across the filter paper, it will expose the different components and their Magnetical and Gravitational field strengths - exemplary graphical explanation in Fig 9.

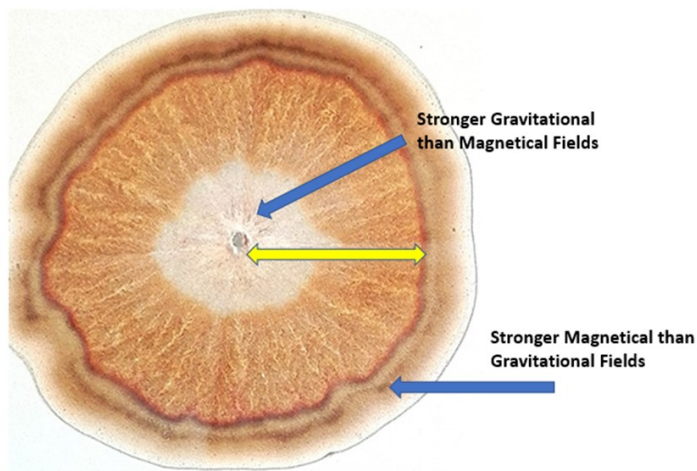


Fig 9. Chromatograph showing changes in MaGrav field strengths from the centre out.

The center zone will show the higher MaGrav strength of the different elements and minerals contained in the plant. The middle zone will show the proteins, vitamins, amino acids. The outer zone displays the integrity, overall health, vitality and strength of the plant.

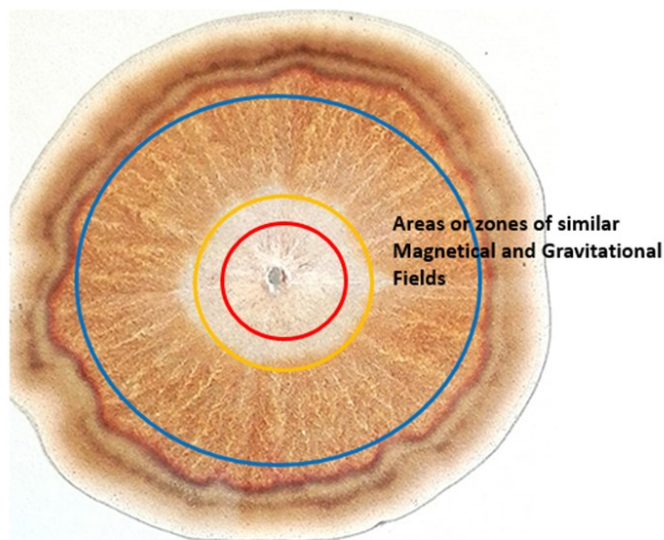


Fig 10. Chromatograph with different zones of similar MaGrav field strengths.

Another way to interpret the Chromatograph is to view the different layers from the center to the outer layer as different layers of Magnetical and Gravitational field strengths- see Fig 10. As the plant solution moves through the filter paper, the elements and minerals having a stronger MaGrav field strength are your first rings and as these stronger MaGrav fields then repel the weaker amino acids and proteins further out from the center.



Fig 11. Rings on a cross-section of a tree trunk.

The same principals when looking at the cross section of a tree trunk is depicted in Fig 11. Figure 12 shows the rings of different MaGrav field strengths within the structure of the root.

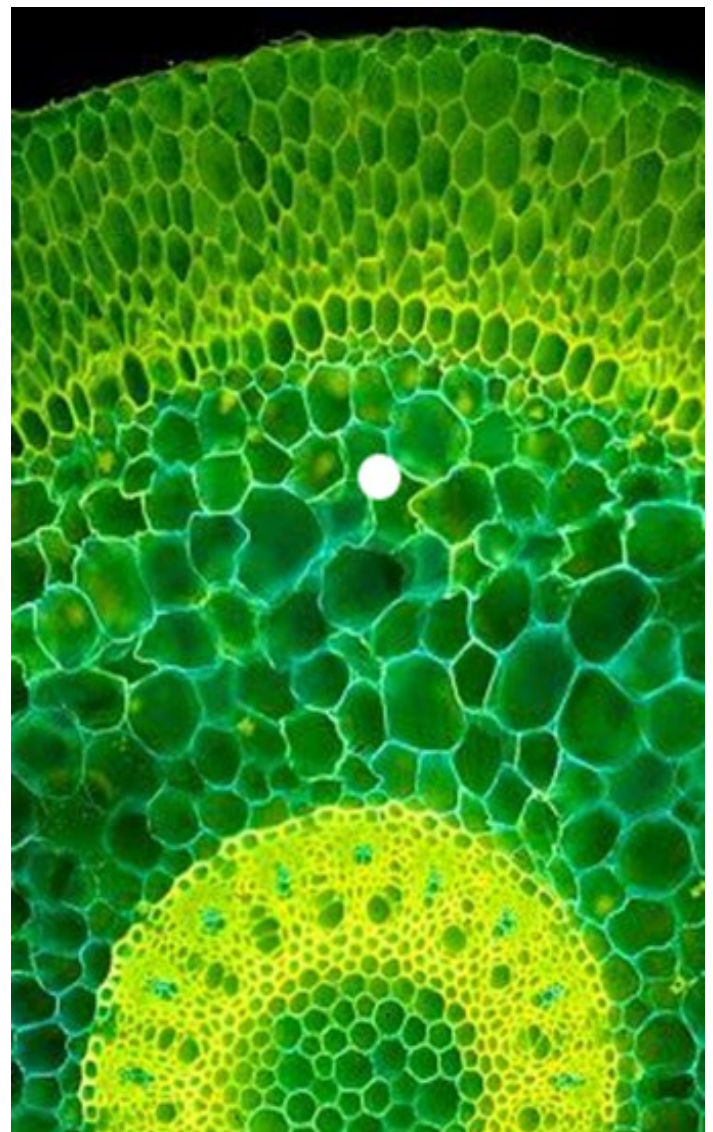


Fig 12. Microscopic image of the root of an orchid plant.

Comparing Daikon Radish grown with Plasma against a shop purchased Daikon Radish

In the paper "Nutrition in Food - Using GANS and its benefits" Ref 1 the Daikon Radish seeds were soaked in the GANS plasma solution for 24 hours. The plants grew for 8 days and harvested. Part of the sample was sent to a laboratory for analysis and another part was kept to produce the Chromatograph images.

To compare these images to Daikon Radish seeds that had not been soaked in the GANS, nor were grown in a plasma environment, Daikon Radish shoots were purchased from another producer.

The objective of performing the Chroma's on the Radish samples was to determine if the images produced showed any marked differences. Previous experiences of growing with GANS shows that when a direct visual comparison is made, one cannot determine any significant difference between plant grown with GANS and those without. Laboratory results have shown that the mineral content differs, and a significant extension of the shelf life has been observed. Ref 1 Therefore, it was investigated whether this method of using the chromatograph could be used to visually show the properties of the plant having higher nutritional values and longer shelf life.

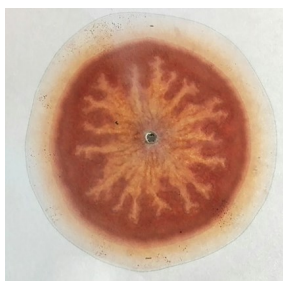


Fig 13. Shop Radish.

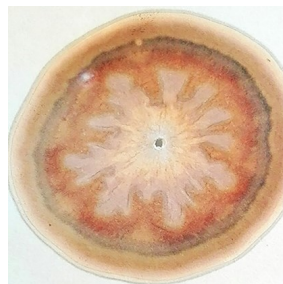


Fig 14. Plasma Radish.

Both batches of plant material were prepared as explained in the Materials and Method section. The following set of images were produced. The two images in Fig. 13 & 14 were produced from the different plant solutions after 1 hour. Allowing the NaOH to break open the different structures of the plant. A marked difference between the Shop radish (Fig 13) and the Plasma Radish (Fig 14) can be seen.



Fig 15. Close-up image of the Shop radish.

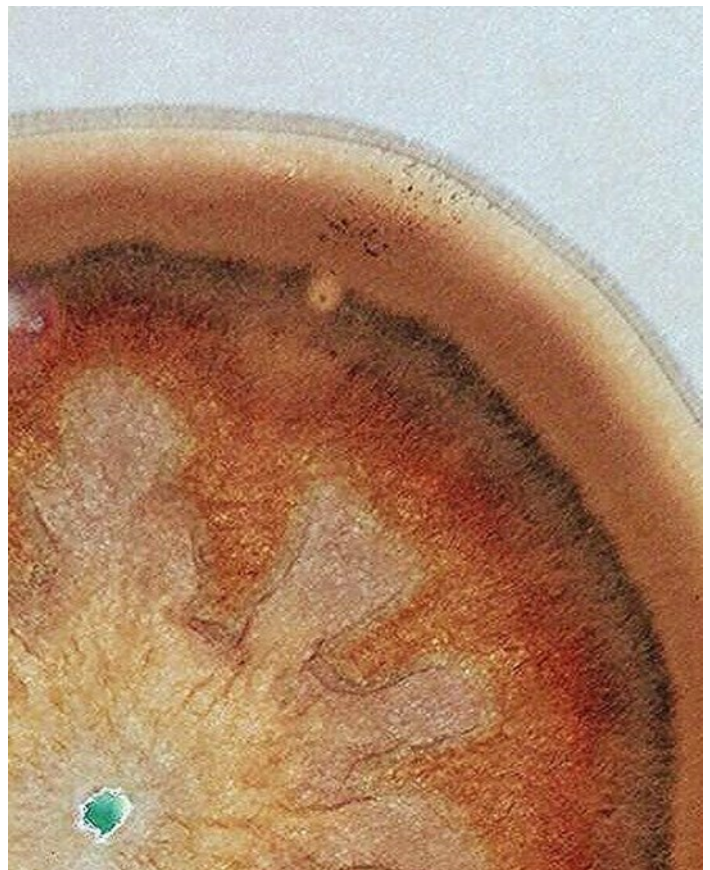


Fig 16. Close-up image of the Plasma Radish.

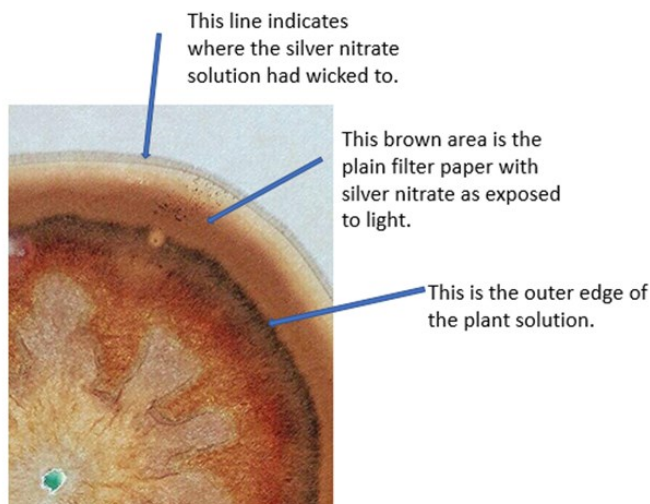
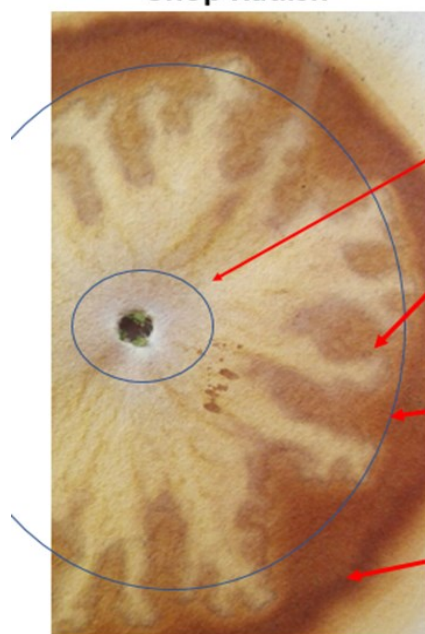


Fig 17. Explaining the chromatograph.

Figure 17 details the different outer layers and what they indicate. The outer line is where the silver nitrate solution had wicked to, on the filter paper. The outer brown area is the silver nitrate exposed to the light. The third ring is where the plant solution had wicked to on the filter paper.

From the chromo images in Fig. 18 & 19, the difference between the plasma radish when compared to the shop radish is clearly visible. There are more distinct layers in the plasma radish indicating stronger defined areas of field strengths. Both plant solutions were soaked in the weak caustic environment.

Shop Radish



We have this white inner zone followed by the second zone containing the forked patterns.

These patterns penetrate to the edge of this zone. Showing the gravitational magnetical interplay between the two areas.

Then we have a third zone, the darker brown areas. The white forks MaGrav field strength is interacting with the MaGrav field strength of the brown areas.

Then we seem to create an outer edge, where we reach a balance point.

Plasma Radish



Fig 18. Analysing the Shop Radish with the Plasma radish as reference.

Plasma Radish



Again we have the inner white zone.

The next zone with the white and brown mixed is quite distinct as compared to the shop radish. This field strength zone is very strong compared to the shop where it extends into the next field strength zone.

We have different patterns, more defined and holding their shape in this next zone.

Clearly distinguish orange and brown areas, creating separation.

The outer boundary is very distinct and seems to show an inner and outer zone creating a layer.

Shop Radish

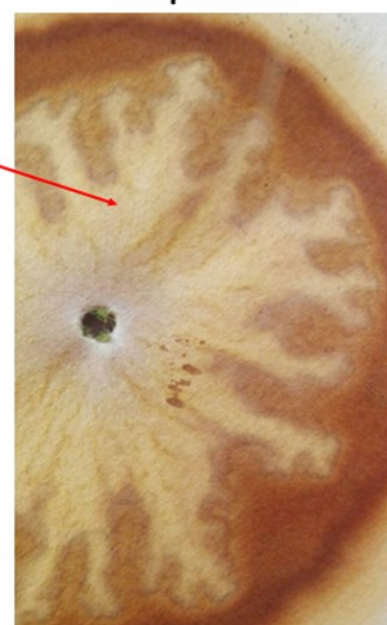


Fig 19. Analysing the Plasma Radish with the Shop radish as reference.

The various components in the shop radish seems to have been broken down, opened-up gravitational magnetically very quickly in the caustic environment. The mixed white brown area has spread out almost to the outer edges, while in the plasma radish this area seems to have been contained in the second circle, still inner zone area (Fig 19). As the gravitational magnetical field strength of the various components of the plasma radish have a higher field strength they were not opened-up by the caustic environment. This is why we see more defined areas, more layers. The outer boundary area in the plasma radish is more distinct and defined, indicating a strong gravitational magnetic field of the plant as a whole. This indicates why we have a longer shelf life from the plasma radish.



Fig 21. Close-up image of the radish grown in the environment of GANS.

Daikon Radish grown in the Environment of Plasma Only

In this experiment the Daikon Radish was grown in an environment which contains GANS. They grew 1.5 meters away from plants that had been treated with the GANS. No GANS was added to the seeds or the plants during the 8 days of growth.

This experiment was to determine whether the radish plants grown in an environment of GANS only would show any visual changes in the chromatograph. Figures 20 & 21 shows the chromo image produced from this radish.

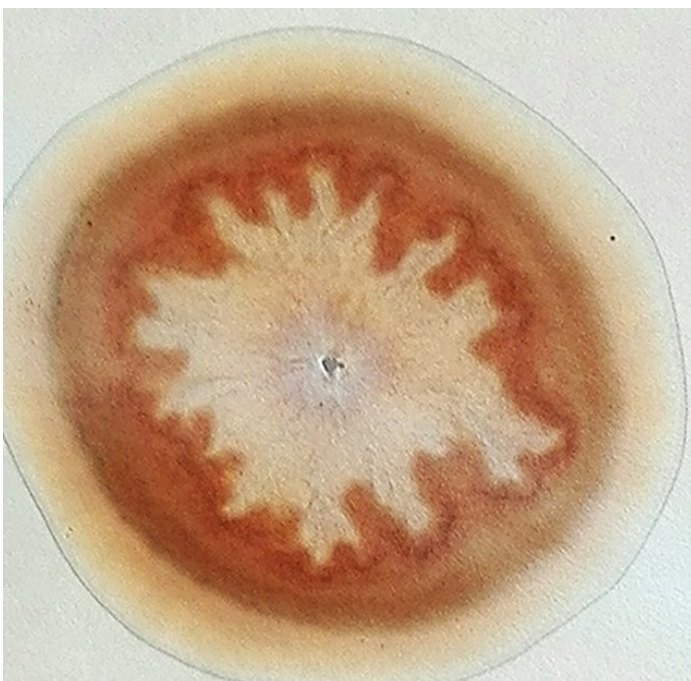


Fig 20. Chromatograph of radish grown in environment of GANS.

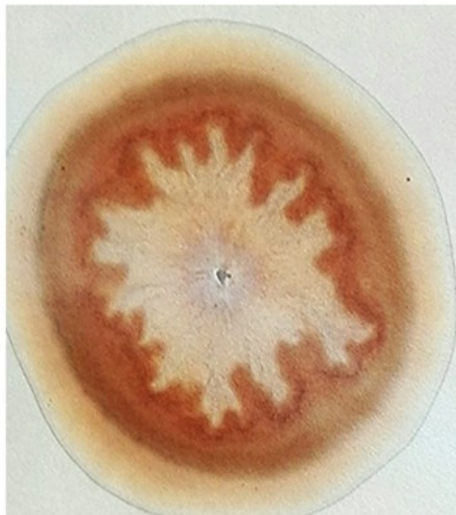
In comparing all three radishes (Fig. 22), the following features stand out::

1. **Border area** clearly defined in the plasma radish is still noticeable in the environment radish and less so in the shop radish.
2. The **white structure** with the forks in the environment radish is more defined and seems to hold together better than the shop radish.
3. The plasma radish seems to have a well-defined pattern, higher integrity, higher strength and vitality.

Plasma Radish



Environment Radish



Shop Radish

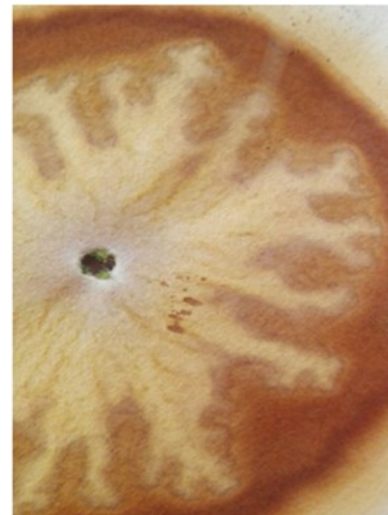


Fig 22. Shows all three chromatographs of the three types of radish.

Comparing Cos Lettuce grown with Plasma against a shop purchased Cos Lettuce

In this experiment a Cos lettuce that had grow in water containing bottles of plasma was used. The seeds were not soaked in the GANS as they are too small. The seedlings were watered with the GANS while they grew in the seeding trays. A Cos lettuce was purchased from the local shop to use as a comparison.



Fig 24. Chromatographs of GANS Cos lettuce.



Fig 23. Chromatographs of Shop cos lettuce.



Fig 25. Cloe-up view of Shop cos lettuce.

Analysis of Results

The images in Fig. 27 & 28 are very distinct from each other and one would assume that they are not of the same plant variety.

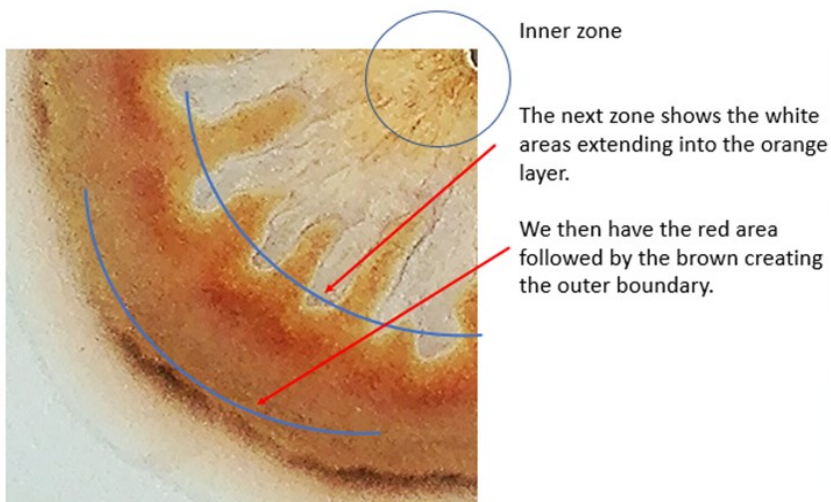
The plant material was left in the caustic solution for 3 days before doing another chromo image. This allowed more time for the caustic environment to open-up the structures of the lettuces.

The images in Fig. 29 & 30 were produced after allowing the plant solutions to soak in the caustic solution for 3 days.



Fig 26. Close-up view of GANS Cos lettuce.

Shop Cos Lettuce

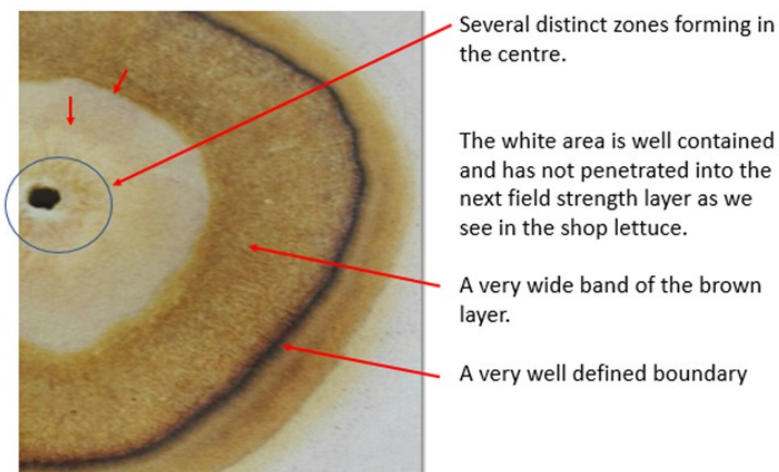


Plasma Cos Lettuce



Fig 27. Analysis of shop cos lettuce with the plasma cos as reference.

Plasma Cos Lettuce



Shop Cos Lettuce



Fig 28. Analysis of the plasma cos lettuce with the shop cos as reference.



Fig 29. Chromatographs of shop cos lettuce.



Fig 31. Shop cos - 1 hour.



Fig 32. Shop cos - 3 days.

Evaluation of Plasma Cos Lettuce

The difference between the 1h and 3day is quite distinct - see Fig. 33 & 34. It appears that the structure and detail in the 3day image has opened up. The extra time allowing the layers to separate more so we can see more of them.

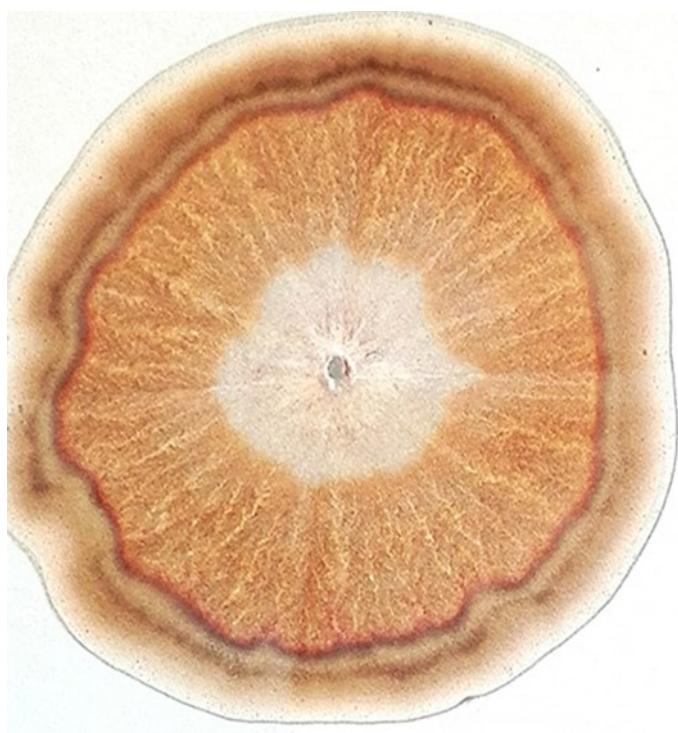


Fig 30. Chromatographs of Plasma cos lettuce.

Evaluation of Purchased Cos Lettuce

Almost no difference between the 1h and 3-day images - as visible in Fig. 31 & 32. The MaGrav field strength of the plant structure was initially weak, so the caustic environment was able to weaken these bonding's within the first hour.



Fig 33. Plasma cos - 1 hour.

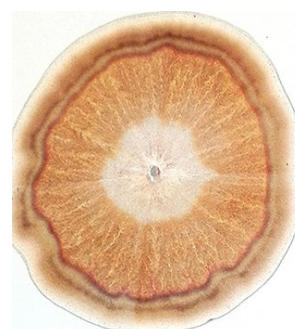


Fig 34. Plasma cos - 3 days.

Plasma Cos Lettuce – 3days

Shop Cos Lettuce – 3days

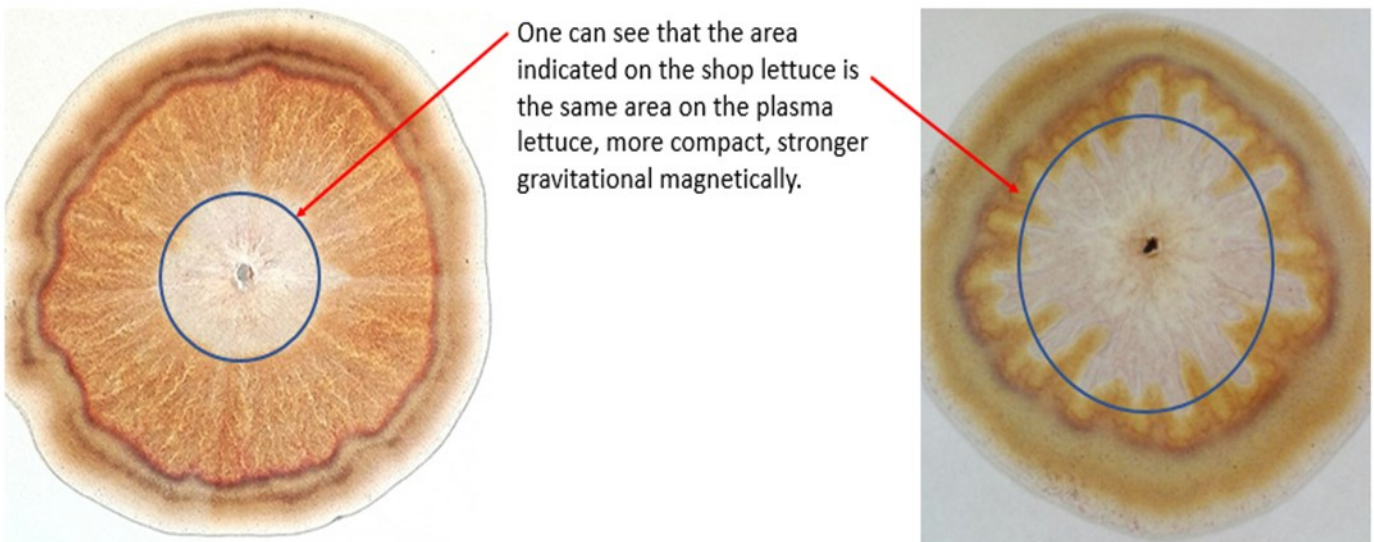


Fig 35. Comparing the image of the plasma cos with the shop lettuce.

Plasma Cos Lettuce – 3days

Plasma Cos Lettuce – 1hour

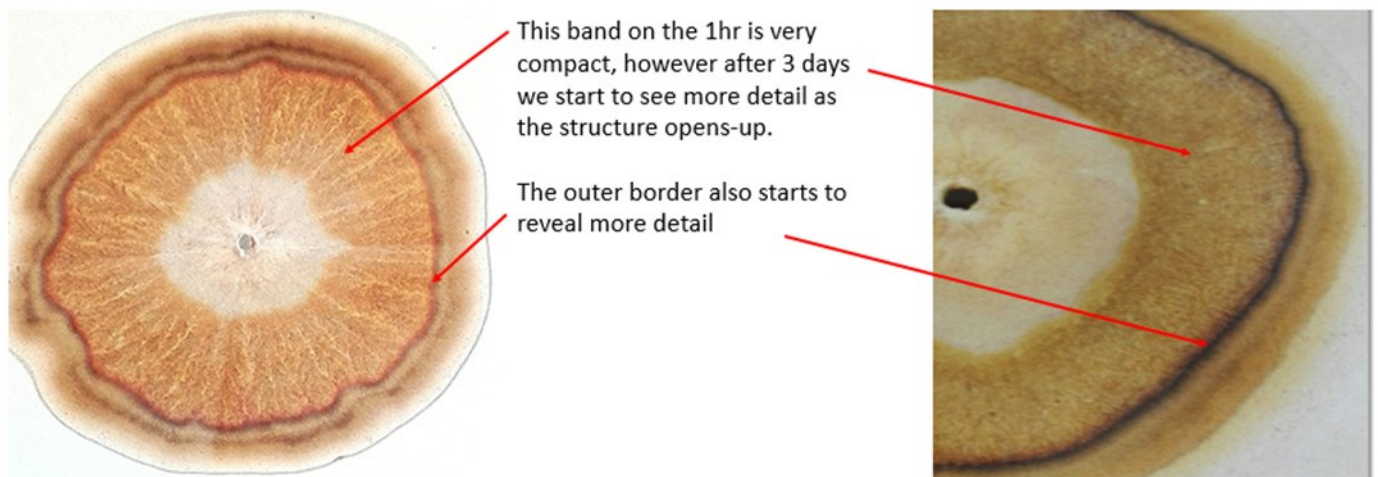


Fig 35. Comparing the image of the plasma cos with the shop lettuce.

Comparing the outer bands between the Purchased Cos and the Plasma Cos



Fig 37. Shop cos lettuce.



Fig 38. Plasma cos lettuce.

A distinctive outer ring, band in the Plasma Cos (Fig 38) compared to the shop lettuce (Fig 37) indicates the integrity and strength of the plant. The Magnetical and Gravitational field strength of the cells, amino acids, proteins remain intact and are not opened-up by the weaker NaOH solution.

In the Shop Cos we do not see a well-defined boundary, meaning the MaGrav strength of the individual components were weaker and were affected by the NaOH solution. We also see a greater amount of detail as the plant structure was broken down by the caustic. As there was no change in the Shop Cos from 1h to 3 days, this indicates that the NaOH environment had opened the structures of the plant very quickly, implying a poor and shorter shelf life.

Overall the Plasma Cos lettuce looks well contained, a strong MaGrav field strength which then leads to a longer shelf life.

Overall Analysis and Observations

In both the Daikon Radish and the Cos Lettuce experiments we can clearly see a marked difference in the structures of the produce grown

with the GANS compared to the produce grown without. Produce grown with the GANS creates a very defined border, which indicates strong health and vitality. Plants which have a stronger Gravitational Magnetic Field strength can account for the higher nutrition and shelf life.

The overall images produced by the Radish and Cos grown with the GANS (Fig 39 and 40) show a uniform structure and order. These images may possibly also indicate the Emotional state of the plants. As in the work done by Masaru Emoto [2] on freezing water and showing the different crystalline formations of a person's emotion, maybe these chroma images are giving us a glimpse into the Emotional state of the plant world.

Are we growing Emotional balanced plants using the GANS and this Emotional balance creates plants with higher nutritional levels? The plants are happy to give and be the best they can be.

Further study and analysis are needed to identify the various layers as to what they represent such as mineral, which proteins or amino acids. The work undertaken in these experiments and the interpretation using the principals and my understanding of the Plasma Science and

Plasma Radish



Fig 39. Plasma Radish. .

Plasma Cos Lettuce

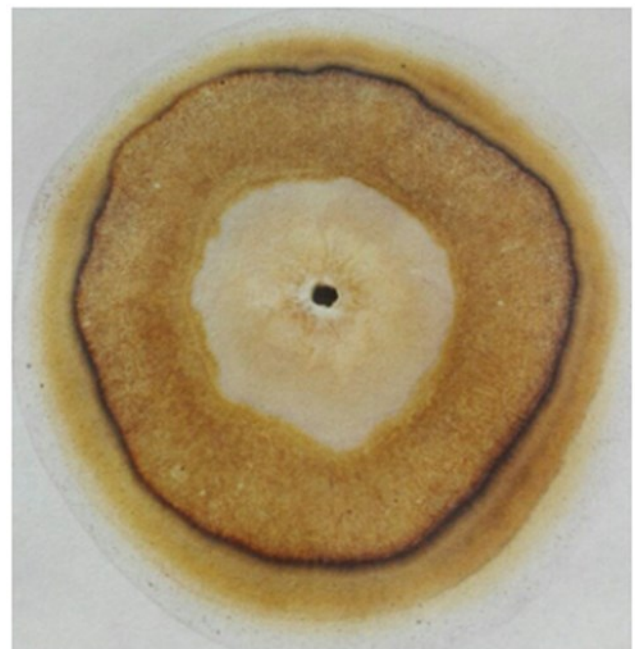


Fig 40. Plasma cos lettuce.

Technology may or may not lead to further work in this direction. The images of the produce grown with GANS certainly tell a story, how we interpret that story needs more work.

An interesting observation is noticed in the different plants solutions originally made with the caustic solution. The bottles of each solution were left for several weeks.

In both the Plasma Radish and the radish grown in the plasma environment (labelled normal radish), as depicted in Fig 41- the plant mixture sank to the bottom leaving a dark green liquid layer on top.

The shop radish (bottle on left) did not sink but all floated to the top, leaving a clear liquid at the bottom. See Fig 41, bottle on left. Mold began to grow on top and the smell from this bottle is rather putrid. No real smell from either of the other two bottles.

This again shows how the produce grown with GANS or even in the environment retains its integrity and vitality.



Fig 41. Plasma Radish.

References

1. MacDonald, J., *Nutrition in Food - Using GANS and its benefits*. KF Plasma Times, June 2019.
2. Wikipedia contributors, *Masaru Emoto, Wikipedia, The Free Encyclopedia*, https://en.wikipedia.org/w/index.php?title=Masaru_Emoto&oldid=896924091 (accessed May 22, 2019).



The objective of this experiment is to determine if we can increase the nutritional value of a plant using the GaNS Plasma Solution.

The following report details the method and results of soaking Daikon Radish seeds in a GaNS Plasma solution, allowing them to grow and conducting tests on the nutritional value of the plant.

**AN INVESTIGATION TO DETERMINE WHETHER USING
THE GANS ON SEEDS CAN IMPROVE THE NUTRITIONAL
VALUE OF OUR FOOD.**



GROWING **NUTRITIOUS** FOOD USING **GANS** AND ITS BENEFITS

Author: **Jim MacDonald**

Published on: **May 2019**

Introduction

Modern Agriculture conjures up a lot of debate around different farming practices.

Does one till the land or not till the land? Do you only surface till the land? Growing organically versus conventional chemical farming. Farming using bio-dynamics principles or farming using permaculture. Growing food in soil compared to growing food in water through hydroponic and aquaponic systems. Each way of farming has its supporters and naysayers. We can all get lost in the debates, but I believe we have lost sight of the one main principle of farming and that is to grow and provide the most nutritious food irrespective of how it is grown. When you go to your local grocer and see an array of fresh tomatoes of different varieties, how do we know which one will give us the most nutrition? What nutrients are we getting, if any? We do not see a list of nutrients on our tomato or carrot, so how can we be sure of what we are buying? When we buy any other food from the store, each product lists the ingredients and nutritional value. Why are we not doing this for our freshly grown produce? The link between food nutrition and our health is a well-established and an obvious connection. We are told by Nutritionists and Doctors "Eat a healthy diet including fruit and vegetables". Yes, they are correct, but how much of the fruit and vegetables do I need to eat every day to ensure my body is receiving enough nutrition? If my food is so depleted of the vitamins and minerals, do I have to eat 3 x times as much just to keep me healthy? Has the nutrition of our food declined so much and is this a big contributing factor to the poor state of our health today?

Materials and Methods

- ⇒ Daikon radish seeds *Raphanus sativus* L. were used throughout these experiments.
- ⇒ Two batches of Daikon plant material were grown and used for analysis.

The two batches of plant material were divided as follows.

- ⇒ The first batch of seeds were soaked in the GaNS Plasma solution. These will be referred to as the **Plasma Radish**
- ⇒ The second batch of seeds were only soaked in distilled water. These will be referred to as the **Plain Radish**

Both batches of Radish plants were watered with our standard nutrient solution which contains the following minerals as a salt solution:

Calcium, Nitrogen, Iron, Potassium, Magnesium, Sulphur, Phosphor with trace amounts of Boron, Zinc and Copper.

GaNS stands for: A molecule of Gas which becomes a Nano of itself and appears as Solid state of matter. The methods of creating this material was developed by M. T. Keshe of the Keshe Foundation [1].

The development of the Plasma Science & Technology and especially in the GaNS and its benefits on both plants and animals is at the leading edge of science. This report cannot go into the depths of knowledge about the GaNS and Plasma Science. Please go to the following links:

www.keshefoundation.org

and

www.kfssi.org

for more background information.

Preparation of Seeds with GaNS

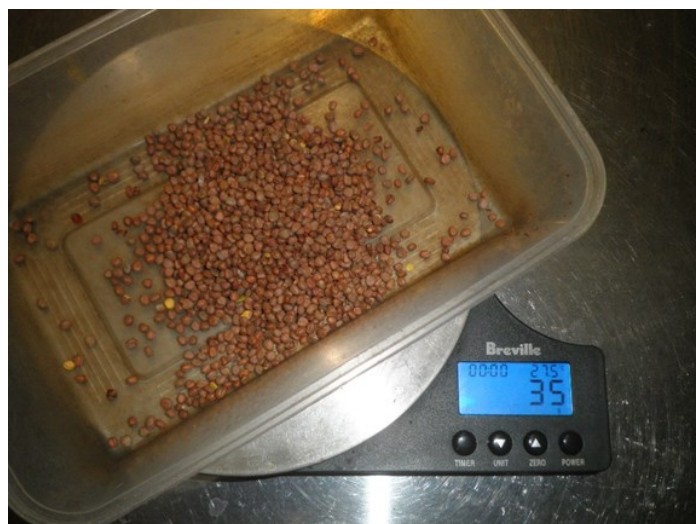


Fig 1. 35 grams of Daikon Seeds - 9th April 2019.

The Daikon Radish seeds were weighed and placed into a container - Fig 1

Subsequently, 1ml of the Plasma GaNS Seed solution (Fig 2) was placed into 500ml of distilled water. (Fig 3 & 4)



Fig 2. GaNS Solution.



Fig 5. Adding GaNS water to seeds.

This solution was then poured into the container with the seeds - as in Fig 5.

This container was placed on a heating mat and covered with a towel. The heating mat keeps the seeds at a warm temperature which helps with the germination, particularly during the colder months (Fig. 6-8).



Fig 3. 500ml distilled water.

Fig 6. Seeds on heating mat



Fig 7.
Seeds
covered.



Fig 8.
Covered
with towel



Fig 4. Mixing GaNS and distilled water.

The seeds were left to soak in the Plasma GaNS solution for 24 hours.



Fig 9. Image of seeds after 24 hours, 10 April 2019.

Fig. 9 shows the seeds after soaking in the Plasma solution.

Full tray of treated seeds is depicted in Fig. 11.



Fig 10. Seeds on coco fibre.

As in Fig. 10 the water is drained away and the seeds are spread out over a 2cm layer of plain coco fibre. The coco fibre contains no nutritional value.



Fig 12. Germinated seeds.

The seeds are covered and allowed to germinate. Figures 12 - 14 shows the radish after germination (14 April 2019).



Fig 11. Tray with daikon seeds, 10 April 2019.



Fig 13. Side view of germinated seeds.



Fig 14. Top view of germinated seeds.

During the germination stage, no water is added. Once the radish has germinated and during the growth period over the next 4 days, the radish is watered morning and evening. This water is taken from a deep water hydroponic grow bed where rain water is collected. It also has glass bottles of GaNS submerged in the water. A 9-litre container is filled with this water and 40ml of our standard hydroponic nutrient mix is added. Over the course of the 4 days, 2ml of the Seed Plasma solution was added three times during this growing period. All other watering was done only with the hydroponic nutrient solution.

Amount of GaNS Plasma Solution used.

- ⇒ The initial soaking of the seeds was in a 0.2% solution of the GaNS
- ⇒ The watering of the plants was with a 0.02% solution of the GaNS

Pictures in Fig. 15 - 17 show the radish on the day of harvest - 17th April 2019. This shows the growth 8 days from soaking of the seeds.



Fig 16. Side view plasma radish.



Fig 17. Close-up view of radish.

Figures 18 - 20 show the root growth of the radish plants. In all previous experiments over the past few years, we have consistently seen rigorous root growth and well-developed roots when using the GaNS on plants.



Fig 15. Top view plasma radish.



Fig 18. Root growth of radish.



Fig 19. Close-up view of roots.



Fig 20. Side view of root growth.

Each time the water was refreshed.

They were then placed into a bag and placed into a spinner 2 times to remove all the excess water.

The total radish was then weighed.



Fig 22. Weighing of radish plants.

From the original 35 grams of seed we produced 424 grams of plant mass (Fig 22). Random samples of individual plants were taken to measure the length of their roots. The set of pictures below show the results.

The plants were placed in a large bath of water to wash the coco fibre off the roots.



Fig 21. Washing of the radish plants.

As in Fig. 21 the plants were washed 10 times to remove the coco fibre.



Fig 23. Measuring length of radish plant.

18cm from tip of root to top of plant (Fig 23).

The length of the plants was measured (Fig 24) to be: 18cm, 18cm, 19cm, 15cm, 14cm, 17cm, 16cm, 14cm.

The length of the roots only was:

12cm, 9cm, 8cm, 6cm, 8cm, 7cm, 5cm, 6cm, respectively.



Fig 24. Measuring multiple radish plants

A sample of 200g of the radish plants with roots were sent to the Environmental Analysis Laboratory of the Southern Cross University for Plant Tissue Analysis on the 17th April 2019.

A sample of 50g of the radish plants and roots was used for the Pfeiffer's Circular Chromatography test. The balance of the radish was placed in the fridge for shelf life evaluation.

Preparation of the Plain Seeds

The Daikon Radish seeds were weighed (35g) and placed into a container on the 16th April 2019 - Fig. 25.

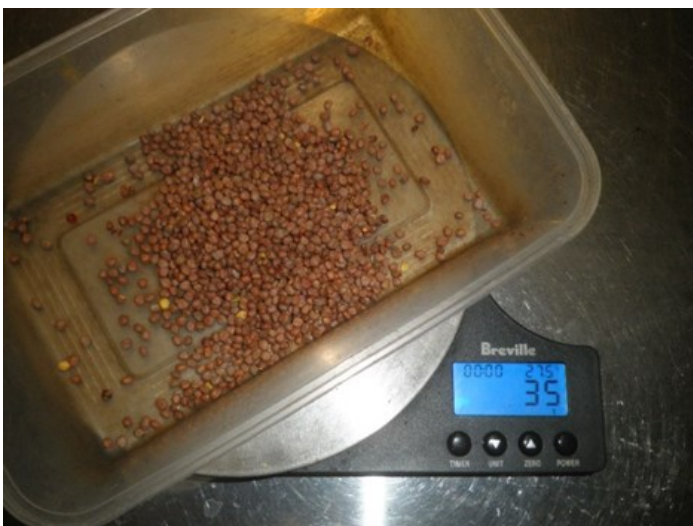


Fig 25. Weighing of Daikon radish seeds.

500ml of distilled water was poured into the container of seeds. No GaNS Plasma solution was added.

This container was placed on a heating mat and covered with a towel. The heating mat keeps the seeds at a warm temperature which helps with the germination, particularly during the colder months - Fig. 26 - 28.



Fig 26. Seeds on heating mat.



Fig 27. Seeds covered.



Fig 28. Seeds covered with a towel.

The seeds were left to soak in the plain water for 24 hours.



Fig 29. Seeds after soaking for 24 hours.

On the 17th April the water was drained (Fig 29), and the seeds were planted.



Fig 30. Tray covered with seeds.

The seeds were spread over a 2cm thick layer of coco fibre (Fig 30).

During the germination stage no water is added. Once the radish has germinated and during the growth period over the next 4 days the radish was watered morning and evening. This water is taken from a deep water hydroponic grow bed where rain water is collected. It also has glass bottles of GaNS submerged in the water. A 9-litre container is filled with this water and 40ml of our standard hydroponic nutrient mix is added. No GaNS plasma solution was added to this water.



Fig 31. Top view of radish plants.



Fig 32. Side view of radish plants.

Figures 31 & 32 show the radish on the day of harvest - 24th of April (8 days from seed to harvest). Pictures in Fig. 33-35 show the root growth of the radish plants.



Fig 33. View of the roots.



Fig 34. Side view of root growth



Fig 35. Close-up view of roots.

The plants were placed in a large bath of water to wash the coco fibre off the roots. The plants were washed 10 times (Fig 36) to remove the coco fibre. Each time the water was refreshed. They were then placed into a bag and placed into a spinner 2 times to remove all the excess water. The total radish was then weighed.

As evidenced by Fig. 37, from the original 35 grams of seed we produced 476 grams of plant mass. In Fig. 38-40 random samples of individual plants were taken to measure the length of their roots.



Fig 36. Washing of radish plants.



Fig 37. Weighing of radish plants.



Fig 38. Measuring plant. 16 cm

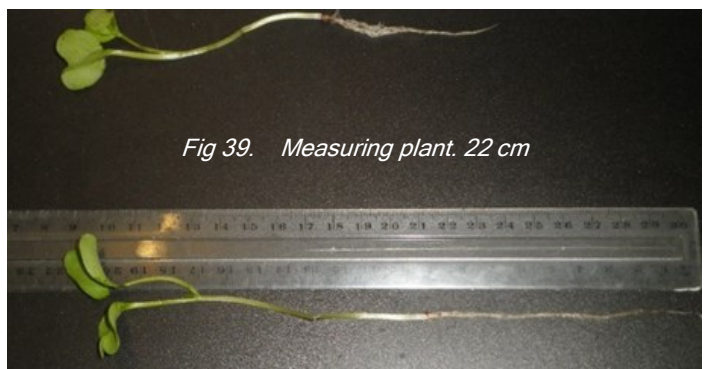


Fig 39. Measuring plant. 22 cm



Fig 40. Length of 17cm.

A sample of 200g of the radish plants with roots were sent to the Environmental Analysis Laboratory of the Southern Cross University for Plant Tissue Analysis on the 24th April 2019.

A sample of 50g of the radish plants and roots was used for the Pfeiffer's Circular Chromatography test. The balance of the radish was placed in the fridge for shelf life evaluation.

Separate Growing Periods

Conventional agriculture testing requires that two groups of plants that are to be compared must be grown together to experience the same growing conditions. Our previous experiments have shown that when we use the GaNS its Magnetical and Gravitational field affects the plants in its immediate vicinity. To overcome this one would need to grow each plant at least 50 meters away to negate the effects of the GaNS material. For this reason, I chose to do my testing and growing over two consecutive weeks. However, the seedlings were still grown in an environment where the GaNS was used on other plants, approximately 2 meters away.

Analysis of the Plant material

The plant material was sent to the Environmental Analysis Laboratory at the Southern Cross University in Lismore, Australia.

The first batch (Plasma Radish) was seeded on the 9th April, harvested on the 17th April and posted to EAL on the same day.

The second batch (Plain Radish) was seeded on the 16th April, harvested on the 24th April and posted to EAL on the same day.

Fig 42. Bar graph comparing the Carbon values.

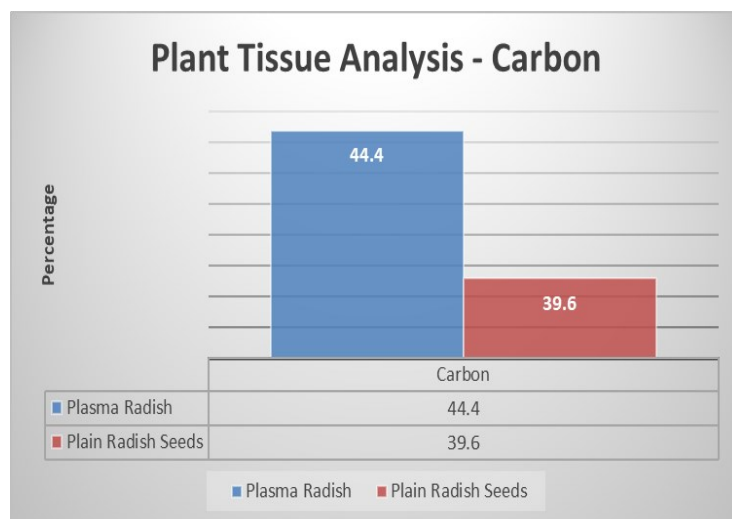


Fig 41. Bar graph comparing the results of the plasma radish and plain radish.

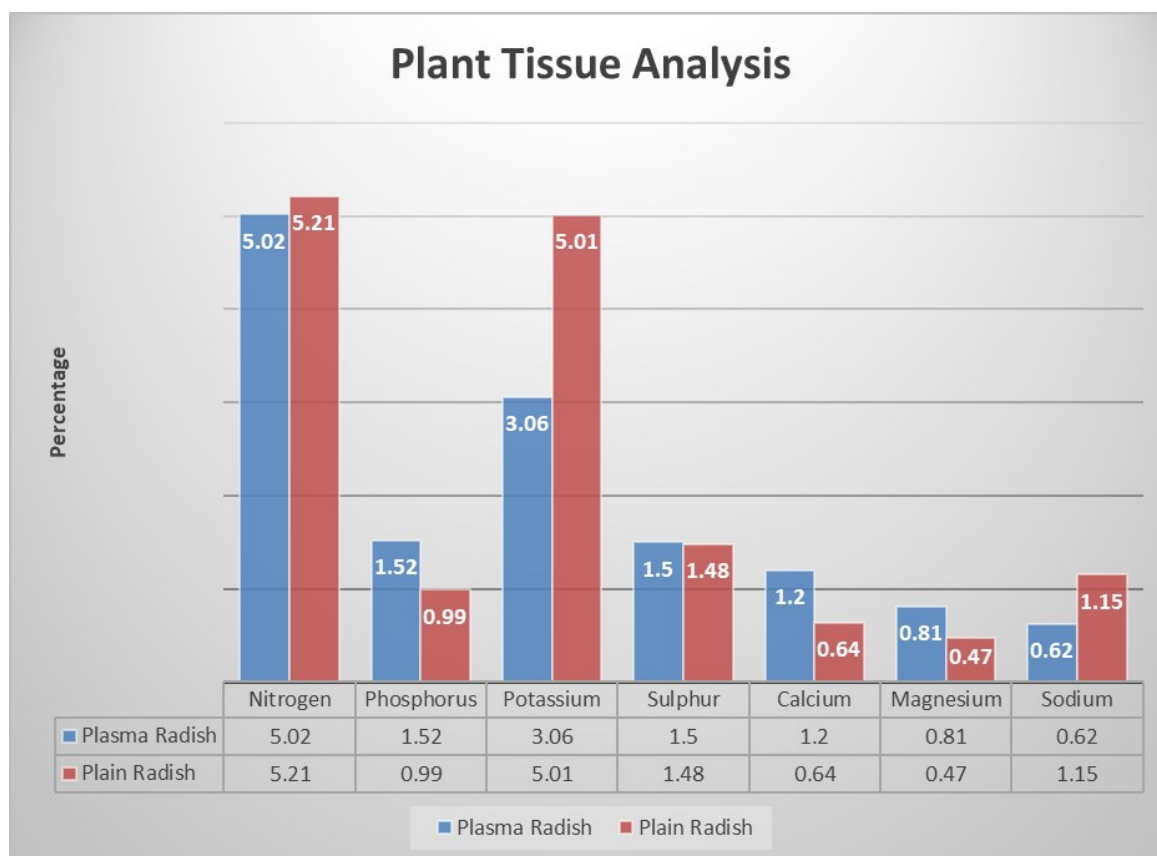


Table 1. Table of the results from the plasma radish and the plain radish		Sample ID:	Plasma Radish	Plain Radish
		Crop:	Daikon Radish	Daikon Radish
Parameter	Method reference	1006/1	1110/1	
Nitrogen (%)	LECO Trumac Analyser - Inhouse S4a	5.02	5.21	
Phosphorus (%)	Nitric Acid digest - APHA 3125 ICPMS	1.52	0.99	
Potassium (%)	Nitric Acid digest - APHA 3125 ICPMS	3.06	5.01	
Sulfur (%)	LECO Trumac Analyser - Inhouse S4a	1.5	1.48	
Carbon (%)	LECO Trumac Analyser - Inhouse S4a	44.4	39.6	
Calcium (%)	Nitric Acid digest - APHA 3125 ICPMS	1.2	0.64	
Magnesium (%)	Nitric Acid digest - APHA 3125 ICPMS	0.81	0.47	
Sodium (%)	Nitric Acid digest - APHA 3125 ICPMS	0.62	1.15	
Copper (mg/kg)	Nitric Acid digest - APHA 3125 ICPMS	43	16	
Zinc (mg/kg)	Nitric Acid digest - APHA 3125 ICPMS	85	50	
Manganese (mg/kg)	Nitric Acid digest - APHA 3125 ICPMS	73	49	
Iron (mg/kg)	Nitric Acid digest - APHA 3125 ICPMS	310	198	
Boron (mg/kg)	Nitric Acid digest - APHA 3125 ICPMS	25	30	
Molybdenum (mg/kg)	Nitric Acid digest - APHA 3125 ICPMS	1	0.9	
Cobalt (mg/kg)	Nitric Acid digest - APHA 3125 ICPMS	0.6	0.2	
Silicon (mg/kg)	Nitric Acid digest - APHA 3125 ICPMS	523	460	
Nitrogen : Sulfur Ratio	Calculations	3.3	3.5	
Nitrogen : Phosphorus Ratio		3.3	5.3	
Nitrogen : Potassium Ratio		1.6	1	
Carbon : Nitrogen Ratio		8.8	7.6	
Crude Protein (%)	Calculation: Total Nitrogen x 6.25	31.4	32.6	

The series of graphs in Fig. 43 & 44 show the mineral compositions of the different radish.

Results and Discussion

Table 2 shows the change in elements' values between the Plasma Radish and the Plain Radish. As shown in Table 2, one can see a marked increase ranging from 10% - 62% increase in the different mineral components of the Plasma Radish when compared to the Plain Radish. These results would indicate that using the GaNS Plasma solutions increases the plants nutritional potential. As the nutrient solution was used on both batches of Radish, this already provides a good base nutrition for the plants to use. Using the GaNS in addition to out nutrient solution has shown a sizable increase in the nutrients measured.

Table 2. The percentage change in values of the different elements.

Results

Plant Tissue Analysis Report

The following set of results and graphs are a direct comparison between the Plasma Radish and the Plain Radish. In both cases the whole plant including the roots was sent for analysis. The original analysis reports for both samples are attached as appendices at the end of this paper.

Appendix A is the report of the Plasma Radish. Appendix B is the report of the Plain Radish.

Table 1 is a direct comparison of the results between the two. The figures shown in Table 1 are graphed in Fig 41 & 42. The bar graphs in Fig. 41 show the comparison between the Plasma Radish and the Plain Radish. Carbon was excluded as the high values distorted the bar graph. The Carbon is show separately in Fig. 42.

	Plasma Radish	Plain Radish	Increase %
Nitrogen	5.02	5.21	-3.78%
Phosphorus	1.52	0.99	34.87%
Potassium	3.06	5.01	-63.73%
Sulphur	1.5	1.48	1.33%
Carbon	44.4	39.6	10.81%
Calcium	1.2	0.64	46.67%
Magnesium	0.81	0.47	41.98%
Sodium	0.62	1.15	-85.48%
Copper	43	16	62.79%
Zinc	85	50	41.18%
Manganese	73	49	32.88%
Iron	310	198	36.13%
Boron	25	30	-20.00%
Molyb-	1	0.9	10.00%
Cobalt	0.6	0.2	66.67%
Silicon	523	460	12.05%

The GaNS Plasma Solution which includes CO₂ GaNS seems to allow a better connection, transfer of energy to the radish plants.

The decrease seen in the Nitrogen is negligible. The decline in Boron corresponds with an increase in Carbon in the Plasma Radish, a possible interplay, transmutation between the two within the plant. The decline in Sodium is positive as it is toxic to plants in very high concentrations. The decline in Potassium needs further investigations.

Comparison and evaluation of Plant growth between the Plasma Radish batch and the Plain Radish batch

Comparison and evaluation of Plant growth between the Plasma Radish batch and the Plain Radish batch

Visual Appearance



Fig 45. Radish grown with GaNS.



Fig 46. Plain Radish grown with no GaNS.

Both batches of radish grew for 8 days. The Plain Radish depicted in Fig. 46 looked taller than the Plasma Radish in Fig. 45. Several factors come into play, amount of sunlight, colder nights. A small change in weather was experienced during this period. Over the many years of growing the Daikon radish, this is normal to see different growth rates from week to week. The weight difference of 52 grams is quite normal depending on the growing conditions for that week.

Comparing Root Growth



Fig 47. Roots



Fig 48 Roots

Figures 47 and 48 show the roots of the Plasma Radish. Figures 49 and 50 show the roots of the Plain Radish. Again, very difficult to really distinguish one from the other. These experiments were done in our Autumn, ideal growing conditions for our climate. Over many years our experience has shown that during the heat of summer and during the winter months we experienced poor germination of our seeds.

Since we started soaking our seeds in the GaNS plasma solution we had a very high germination rate even in the Summer and Winter months, as well as good root growth in intense heat, which was not achieved before using the GaNS. In all our research to date we have consistently seen a marked improvement in the root structure of the plants, especially when the weather should affect them negatively.



Fig 49 Roots



Fig 50 Roots

Shelf Life

The shelf life is essentially how long the radish will last in refrigerated conditions. This is critical for both the farmers and shopkeepers. Prior to using the GaNS our shelf life of the Radish was about 14 -16 days from harvest. Our previous experiments have shown how we increased the shelf life 3 times by using the GaNS. In that experiment the radish lasted 180 days in a 4 oC fridge. The following set of photographs below show the condition of the radish used in this experiment in our fridge.



Fig 51. Plasma radish after 26 days in the fridge. 12 May 2019.



Fig 52. Plain radish after 19 days in the fridge. 12 May 2019.

The Plasma Radish in Fig 51 is showing a superior shelf life in the fridge compared to the Plain Radish in Fig 52. This again confirms our initial fridge trials on the radish in which we achieved superior shelf life of over 3 times.



Fig 53. Plasma radish 34 days in the fridge. 20th May 2019..



Fig 54. Plain radish 27 days in the fridge. 20th May 2019.

The extended shelf life that the Plasma Radish exhibits cannot be solely explained by the increased nutritional content. Through the understanding of the Plasma Science all living beings, including plants are made of GaNS.

Each plant type will have its own MaGrav field strength, which is made up of the trillions of cells, GaNSes with their own MaGrav field strength.

The combination of all these plasma's gives us the overall MaGrav field strength of the plant. The addition of the GaNS allows the plant on an individual plasma level to increase its Magnetical and Gravitational field strength.

Decomposition of plants occurs when the cells lose their Magnetical and Gravitational (MaGrav) field strength to their environment. The lower the MaGrav strength the quicker they will decompose, resulting in a shorter shelf life.

The higher the MaGrav strength the longer the shelf life. The GaNS is interacting with the plants on an individual plasma level giving and taking MaGrav fields.

This effect of longer shelf life, in my opinion is best achieved when the produce is treated with the GaNS from the seed stage and throughout its growing period.

Potential Nutritional Value of Plants

This research was undertaken to look at how the GaNS material could influence the seeds and plants in bringing their nutritional potential back to optimum levels.

Historical Perspective

Many studies have been done comparing the nutritional value of produce grown 100 years ago to today and the results may shock you.

Data in Table 3 represents 1 medium apple including the skin and is based on the work of Lindlaar, 1914; USDA, 1963 and 1997 cited in [2].

Another way to view this data is to look at how many apples one would have to eat in 1992 to get the same nutrition as the 1 apple in 1914.



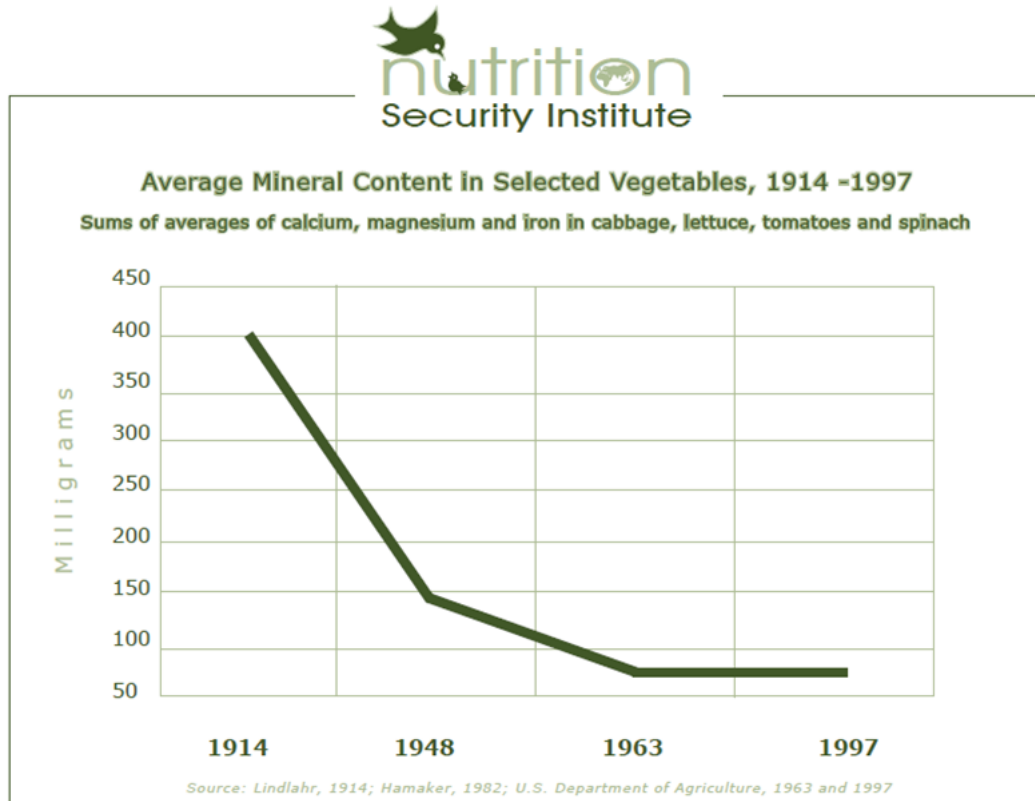
Calcium	2 apples
Phosphorous	6 apples
Iron	25 apples
Potassium	1 apple
Magnesium	6 apples

This illustrates the decline in the nutritional value of apples. Can you imagine what it is today? Figure 55 illustrates the decline of the total nutrition of a cabbage, lettuce, tomato and spinach between 1914 and 1997.

The total Calcium, Magnesium and Iron in these four vegetables totalled 400mg in 1914. In 1997 it totalled 75mg, a decline of 81.25% over the 83 years. To summarize one would need to eat 5 x the amount of the cabbage, lettuce, tomatoes and spinach in 1997 to get the same nutrition they gave you in 1914.

Table 3. The nutritional value of a simple apple over 78 years.

Mineral	1914	1963	1992	% Change
Calcium	13.5mg	7.0mg	7.0mg	-48.15
Phosphorous	45.2mg	10.0mg	7.0mg	-84.51
Iron	4.6mg	0.3mg	0.18mg	-96.09
Potassium	117.0mg	110.0mg	115.0mg	-1.71
Magnesium	28.9mg	8.0mg	5.0mg	-82.70

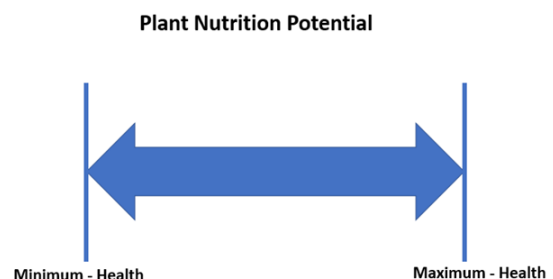


The decline in the nutrient value of our foods is partly due to the degradation and destruction of our soils over the decades. We have gone from small scale farming to commercial sized farming to feed the world's population.

The use of fertilizers in the soils is like a drug addict who always needs another fix. When you start down the road of using fertilizers on your farm you eventually destroy your soils, so that over time you need more and more fertilizers to get the same growth. Most farming today is unsustainable and food security for many nations is becoming a top priority.

As there are many farming methods, so there are many ways to tackle this problem, each one coming from a different perspective. A wholistic approach needs to be taken.

One where we can increase the nutritional content of our food while at the same time regenerate our soils and at the same time remove the toxins from the soils, while creating an environment where the plants, animals and humans are happy. Far-fetched, impossible - NO. With the development of the Plasma Science and Technology for space travel at the Keshe Foundation all the above criteria can be resolved at the same time.



Over the last century, the nutritional value of our foods has shown a steady decline. It is not the plants that have changed so much, but rather the conditions in which they are growing.

This information of poor growth has unfortunately been passed onto each successive generation of new plants through the seeds. This new information as Magnetical and Gravitational fields, has been added to the DNA and RNA of the seeds. Growing with these seeds today means we are starting from a lower base.

This implies that the plants have the potential to provide us with very high nutrient values if given the right growing conditions. Plants grown in very poor soils and conditions will still grow, albeit looking small, unhealthy and susceptible to all sorts of pests and diseases. This would be the minimum conditions for the plant to sustain itself. I believe this is what we are facing today in feeding the world's population.

Plants grown in perfect conditions, not wanting for anything will grow to their full potential, the best Radish or Carrot it can be. History has shown the potential of the plants.

The results that we have shown of increased minerals in the Daikon Radish by soaking the seeds in the GaNS Plasma solution is giving us an indication that we can increase the nutritional content of our crops, allowing the plants to grow to their full potential.

By increasing the health of the plant, you are also reducing the prevalence of any pests or diseases. The same comparison can be made in people, a healthy fit person will not be susceptible to diseases compared to a very overweight, unhealthy person.

In previous trials conducted by M.T Keshe of the Keshe Foundation it has been shown that soaking the seeds in GaNS removes the layers of information of the conditions and environment of the past that has been passed onto the seeds over the generations. In the experiment they were able to take the seeds of wheat and it showed its true origin as a grass.

It must be understood that we are not changing the genetics of the plants to achieve higher nutritional levels, all we are doing is allowing the plants to grow and thrive under all conditions and in so doing the plants will have a higher nutrient level because the potential already existed in the plant. We are allowing the plant to express its full potential.

This concept can be applied on the commercial scale farming in the following way. Adding the GaNS into the seed coating mixture that is currently used. Artificial coating of seeds is used to improve handling and for the delivery of protectants, symbiotic microorganisms, micronutrients, soil adjuvants, germination promoters and growth regulators. By adding the GaNSes into this mix we can potentially achieve the following:

- ⇒ Ease of distribution of the GaNS with the seeds, thereby eliminating an additional cost for the farmer to distribute the GaNS onto his farm.
- ⇒ The addition of micronutrients in the coating mixture with the GaNS will allowing a better connection to the seed and the plant as a whole.
- ⇒ The GaNS is added to the soil through the seed coating thereby aiding in the overall regeneration of the soils and the microbial life in the soils. This will have a long term beneficial impact on the soils, environment, plants and people.
- ⇒ The environment of the farm can be changed with the addition of the GaNS
- ⇒ An acceptable method of introducing the GaNS to commercial farmers who tend to be creatures of habit and do not like change.

Further Investigations

As stated before, the plain radish was watered with our reservoir of rain water, which does have bottles of GaNS in the water. The whole area in which we grow has many bottles of GaNS and certain plasma devices in the water in the nearby growing beds. How this plasmatic environment plays a role will require further experiments but for this current experiment it is something we need to be aware of.

Health Impacts on Society

Eating produce that is grown with the GaNS over an extended period will have a huge impact on the long-term health (physical and emotionally) of people. Our experience over the last 3 years in supplying our local area with the food grown with the GaNS has shown some interesting behaviour patterns.

- ⇒ We have a dedicated following of clients
- ⇒ Customers get upset when we cannot supply, it almost seems they become “addicted” to the benefits (nutritionally and emotionally) that the produce offers.
- ⇒ Our demand over the winter, colder months does not decline as much compared to the period before we started using the GaNS

Conclusion

Using the GaNS Plasma solution increases the plants nutritional potential, allowing them to physically and emotionally thrive. The emotional benefits of using the GaNS for the plants and the humans who eat and cultivate the produce is an additional, unquantifiable benefit. The results shown in this experiment are essentially a snap-shot in time of the life of the plant. The figures will change as the radish grows to maturity and throughout the growth stage. The seeds collected from these plants will contain new DNA and RNA information for future generations of plants and potentially increase the nutritional benefit even further. The increased shelf life of the Plasma Radish is confirming previous experiments undertaken by the author. Increased nutritional values can contribute to this effect. However, nutrient values do NOT account for the very significant increase. This is where the real benefits of using the GaNS shows itself. Just a doubling of shelf life will have profound benefits for small scale farmers around the world. Their ability to bring their crops to the markets with less waste will have a direct effect on the financial wellbeing of the farmers and the communities. Nations can grow the same amount of food today but can feed more people, as there will be less loss of food when getting it to the consumer. Further testing on other crops is required as this experiment has shown marked benefits of using the GaNS plasma solution on seeds.

References

1. Keshe, M.T., The Origin of the Universe, (pp. 13). Stitching the Keshe Foundation, 2011.
2. Nutrition Security Institute, Food Nutrition Decline, <http://www.nutritionsecurity.org/PDF/Food%20Nutrition%20Decline.pdf> (accessed May 20, 2019).

Appendix A - Plasma Radish Lab Analysis



Southern Cross University
PO Box 157 Lismore NSW 2480
Ph +61 2 6620 3678
E: ea@scu.edu.au
www.scu.edu.au/eal
ABN 48 908 091 834

PLANT TISSUE ANALYSIS REPORT

1 sample supplied by Plasma In Nature on 23rd April, 2019. Lab Job No.11006

Analysis requested by Jim MacDonald. Your Job: Plasma Radish

22a Forbes Close BONVILLE NSW 2450

		Sample 1
Sample ID:		Diskon Radish
Crop:		Diskon Radish
Client:		J. MacDonald
Parameter	Method reference	11006/1
Nitrogen (%)	LECO Trumac Analyser - Inhouse S4a	5.02
Phosphorus (%)	Nitric Acid digest - APHA 3125 ICPMS	1.52
Potassium (%)	Nitric Acid digest - APHA 3125 ICPMS	3.06
Sulfur (%)	LECO Trumac Analyser - Inhouse S4a	1.50
Carbon (%)	LECO Trumac Analyser - Inhouse S4a	44.4
Calcium (%)	Nitric Acid digest - APHA 3125 ICPMS	1.20
Magnesium (%)	Nitric Acid digest - APHA 3125 ICPMS	0.81
Sodium (%)	Nitric Acid digest - APHA 3125 ICPMS	0.62
Copper (mg/kg)	Nitric Acid digest - APHA 3125 ICPMS	43
Zinc (mg/kg)	Nitric Acid digest - APHA 3125 ICPMS	85
Manganese (mg/kg)	Nitric Acid digest - APHA 3125 ICPMS	73
Iron (mg/kg)	Nitric Acid digest - APHA 3125 ICPMS	310
Boron (mg/kg)	Nitric Acid digest - APHA 3125 ICPMS	25
Molybdenum (mg/kg)	Nitric Acid digest - APHA 3125 ICPMS	1.0
Cobalt (mg/kg)	Nitric Acid digest - APHA 3125 ICPMS	0.6
Silicon (mg/kg)	Nitric Acid digest - APHA 3125 ICPMS	523
Nitrogen : Sulfur Ratio	Calculations	3.3
Nitrogen : Phosphorus Ratio		3.3
Nitrogen : Potassium Ratio		1.6
Carbon : Nitrogen Ratio		8.8
Crude Protein (%)	Calculation: Total Nitrogen x 6.25	31.4

Notes:

1. All analysis is dry weight - Samples dried at 70°C prior to fine grinding
(Reuter & Robinson, 1997. Plant analysis an interpretation manual, 2nd Edition.
CSIRO: Collingwood, VIC)
2. Unless requested, leaf samples are NOT washed to remove contaminants of salts or metals.
3. Guidelines published in Bryson & Mills, 2014. Plant Analysis Handbook, 4th edition. Micro-Macro Publishing, Inc.
4. Analysis conducted between sample arrival date and reporting date.
5. This report is not to be reproduced except in full. Results only relate to the item tested.
6. All services undertaken by EAL are covered by the EAL Laboratory Services Terms and Conditions.
These Terms and Conditions are available on the EAL website: scu.edu.au/eal, or on request.

Checked: Kfir Saville
Agricultural Co-Ordinator

KS



CPRODS Provider: 0121610

Appendix B - Plain Radish Lab Analysis



Southern Cross University
PO Box 157 Lismore NSW 2480
Ph +61 2 6620 3678
E: ea@scu.edu.au
www.scu.edu.au/eal
ABN 48 905 091 534

PLANT TISSUE ANALYSIS REPORT

1 sample supplied by Plasma In Nature on 29th April, 2019. Lab Job No: J1110

Analysis requested by Jim MacDonald. Your Job: Plain Radish

22a Forbes Close BOWVILL NSW 2430

Sample ID: Crop: Client:		Sample 1 Plain Radish Radish J. MacDonald
Parameter	Method reference	J1110/1
Nitrogen (%)	LECO Trumas Analyser - Inhouse S4a	5.21
Phosphorus (%)	Nitric Acid digest - APHA 3125 ICPMS	0.99
Potassium (%)	Nitric Acid digest - APHA 3125 ICPMS	5.01
Sulfur (%)	LECO Trumas Analyser - Inhouse S4a	1.48
Carbon (%)	LECO Trumas Analyser - Inhouse S4a	39.6
Calcium (%)	Nitric Acid digest - APHA 3125 ICPMS	0.64
Magnesium (%)	Nitric Acid digest - APHA 3125 ICPMS	0.47
Sodium (%)	Nitric Acid digest - APHA 3125 ICPMS	1.15
Copper (mg/kg)	Nitric Acid digest - APHA 3125 ICPMS	16
Zinc (mg/kg)	Nitric Acid digest - APHA 3125 ICPMS	50
Manganese (mg/kg)	Nitric Acid digest - APHA 3125 ICPMS	49
Iron (mg/kg)	Nitric Acid digest - APHA 3125 ICPMS	198
Boron (mg/kg)	Nitric Acid digest - APHA 3125 ICPMS	30
Molybdenum (mg/kg)	Nitric Acid digest - APHA 3125 ICPMS	0.9
Cobalt (mg/kg)	Nitric Acid digest - APHA 3125 ICPMS	0.2
Silicon (mg/kg)	Nitric Acid digest - APHA 3125 ICPMS	460
Nitrogen : Sulfur Ratio	Calculations	3.5
Nitrogen : Phosphorus Ratio		5.3
Nitrogen : Potassium Ratio		1.0
Carbon : Nitrogen Ratio		7.6
Crude Protein (%)	Calculation: Total Nitrogen x 6.25	32.6

Notes:

1. All analysis is dry weight - Samples dried at 70°C prior to fine grinding
(Reuter & Robinson, 1997. Plant analysis an Interpretation manual, 2nd Edition.
CSIRO: Collingwood, VIC)
2. Unless requested, leaf samples are NOT washed to remove contaminants of salts or metals.
3. Guidelines published in Bryson & Mills, 2014. Plant Analysis Handbook, 4th edition. Micro-Macro Publishing, Inc.
4. Analysis conducted between sample arrival date and reporting date.
5. This report is not to be reproduced except in full. Results only relate to the item tested.
6. All services undertaken by EAL are covered by the EAL Laboratory Services Terms and Conditions.
These Terms and Conditions are available on the EAL website: scu.edu.au/eal, or on request.

Checked: Kfir Saville
Agricultural Co-Ordinator

KS

WASHER DETERGENT BALL EXPERIMENT

by Elizabeth M. , March 2019

I understand that plasma fields can cleanse water. I have been wondering about the cleansing effect of plasma fields on solid matter? I had a thought about making a GaNS of laundry detergent and putting it in balls or / and to putting the balls in the washer with the laundry. I was wondering if the fields would clean the clothes without any detergent touching them, just like vitamins can be absorbed into the body through the fields without ingesting them.

Aviram suggested trying 2 balls with just LP-CO₂ and LP-CuO in 2 different concentrations and spinning them in the washing machine.

I went to the dollar store and bought dog balls. I drilled a hole in each and injected 30 mL of CO₂ and 30 mL of CuO into one ball and 10 mL of CO₂ and 10 mL of CuO into the other ball. I sealed them with hot glue.

I placed the two balls in the washer with white rags (the kind you buy in bulk at automotive stores). On one, I put mud from the garden, on the second one, I put vegetable oil, on the third, blueberry juice, on the fourth, mustard and on the fifth, ketchup.

I put the cloths through a normal wash cycle with the balls, using cold water, without detergent or softener.

It quickly became evident that the balls were too heavy, so I turned off the spin cycle. At the end of the wash, the mud and oil cloths were clean, which could have been due to the water used and maybe some residual detergent from previous washes. Ketchup was almost clean, with a slight reddish tint in some places, but the mustard and blueberry had definite yellow and blue stains.

So, my conclusions were that I would need to find different containers for the plasma water. I remember some years ago seeing small plastic balls with rubber "fingers" on them that were used in the dryer to remove static electricity. I think those balls with the "fingers" might be better, if I could find them.

I went to pet shop and bought a couple of these balls for my next try for washer balls.



I made a detergent and whitener mix - the amount called for a washer load - and added CO₂ and CuO in a 3:1 ratio and topped up with water. After shaking it and allowing it to sit for a couple of days, I injected one ball with 30 mL and one with 10 mL of the mixture. That worked much better. These balls are soft enough that they do not bang around in the washer. The hot glue seal is holding up well.

The mud and oil cloths were cleaned, and the ketchup stain was almost eliminated.
The stains of mustard and blueberry were still evident.

I wondered about presoaking the stains in water with balls. It helped a little but did not eliminate the mustard and blueberry stains.

Next I made a spray bottle of 1 cup CO₂ and a scoop the whitener in a spray bottle. I filled it up with filtered water and let it sit overnight. I tried spraying it on the stains. The result was that the yellow in the mustard stain came out - it disappeared immediately. However, there appeared in its place, a red stain. Strange! The ketchup stain worked well, but there was a little blueberry stain left. I ran them through the washer with the balls again. When they came out, the mustard stain was yellow again. The blueberry stain was a greyish brown color but definitely improved.

The original dog balls have not gone to waste. I put them in the hot tub to see if they will improve water quality and reduce the amount of chemicals that were needed.

Update: Well, the preliminary results on the balls in the hot tub are in. After two days with the balls in the tub, we had a water test done and we needed about a half of the chemicals that we usually require.

“

<https://testimonials.keshfoundation.org/>



HOST WANTED

FOR PRIVATE TEACHINGS IN ENGLISH

We are looking for volunteers to host our Private Teachings in English. This position will be a part time position. Several people will fill this position, sharing hosting duties each week. This allows 2-4 people to share hosting duties each week for our private classes.

REQUIREMENTS:

- A recent computer within the last 5 years. Windows 7, 8 or 10 or MacOS 10.9 or later system;
- Desktop or Laptop computer only. Zoom hosting from tablets or phones not acceptable;
- The latest version of Zoom installed on the computer;
- 6-8 GB of RAM or more;
- 3D graphics card recommended, but not required, most newer systems have them built-in;
- **TWO MONITORS required!** (Most systems have HDMI out. You can easily hook up a TV) ;
- Fast internet speed (**Please test your internet speed at www.speedtest.net and report findings below**);
- Minimum of at least 3-5 Megabit upload and 10 Megabit download. Anything less than this will hinder sharing full screen videos. Optimal is 10 Mbit up 50Mbit down or higher. The faster the better!
- Decent headset required, preferably with noise canceling microphone. (example: Sennheiser PC-151 headset) o Built-in computer microphone is only acceptable as a backup;
- KFSSI Student ID required;
- Clear understandable English-speaking voice;
- Technically proficient in running your computer and operating system with basic operation, troubleshooting and analytic skills;
- Ability to multitask or willingness to learn: opening and sharing in zoom various file types, pictures, movies and switching between them while listening to teacher & interact as host when needed and keep track of chats.

JOIN US

Looking forward to receiving the questions daily:
education@kfssi.org

ABC

of publishing in

PLASMA SCIENTIFIC JOURNAL**A. Prepare your work**

Firstly, you need to prepare. You can either document the work which has already been done and perhaps even presented by you in the testimonials meeting or website, or you can plan a new experiment. You should always be clear on what you are trying to achieve and document everything as you go (label and take pictures).

B. Write your paper

Gather all the notes and pictures together and when writing your paper put yourself in the reader's shoes. Do not assume anything but present everything from the start, explaining every aspect of the experiment, which may not be obvious, and remember that "a picture is worth a thousand words". If needed, relate to other peoples' work by referencing their articles, websites or other openly available resources. Start by downloading the Scientific Plasma Journal template and short guide for authors available at

<https://support.keshefoundation.org/faq.php?section=science-journal&qid=189#q189>

C. Upload and submit

Once finished, upload your Word, OpenOffice or PDF file onto one of the cloud or filesharing services, or even onto Facebook. Go to <https://support.keshefoundation.org> and from the drop-down menu select Plasma Scientific Journal Submissions and press Go. Through this website, you can either submit your work, ask a question or access resources and the FAQs.

Any question? Get in touch with us via

<https://support.keshefoundation.org>

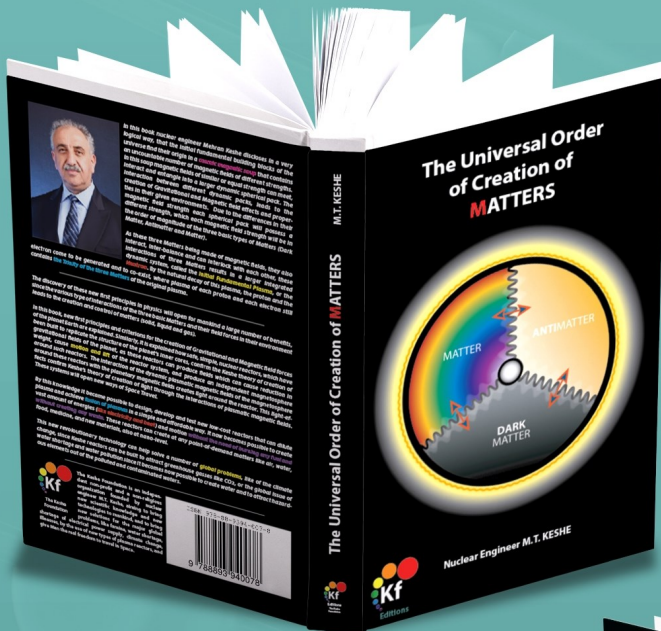
The full version of this article, author guide, and templates also available at:

<https://keshefoundation.org/education/news/kf-ssi-education/plasma-scientific-journal/plasma-scientific-journal>

Submit your publication today! Be the Creator and shine for others to see your beauties.

JOIN US

Looking forward to receiving the questions daily:
education@kfssi.org

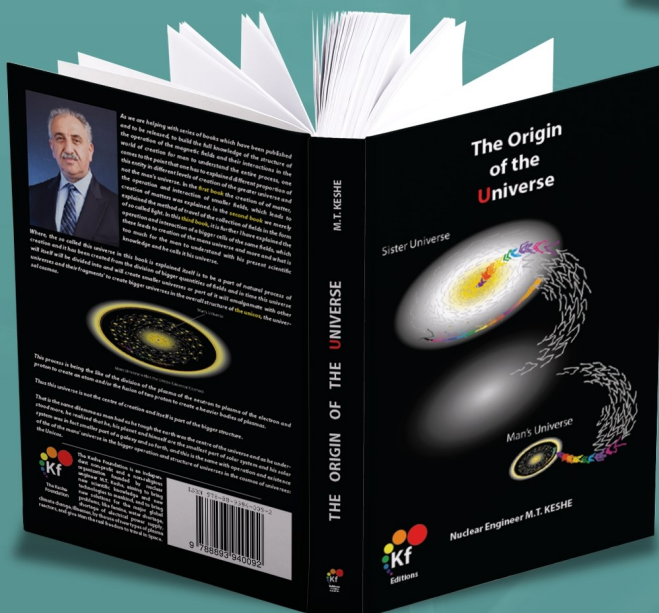
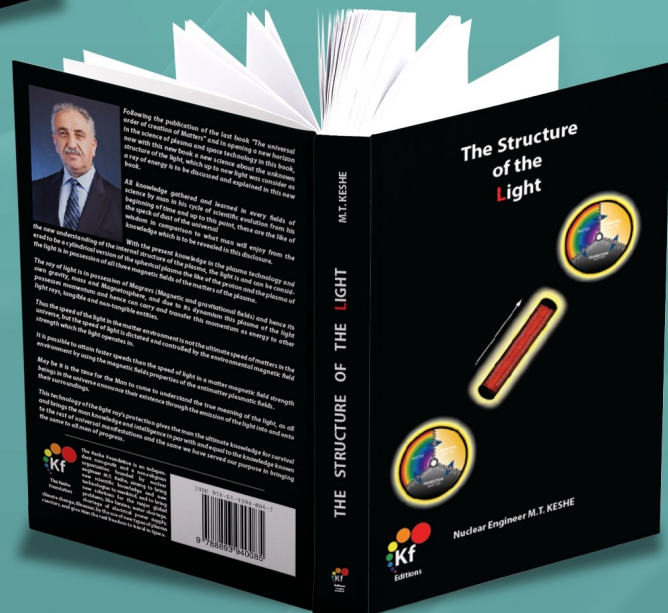


BOOK 1

The Universal Order of Creation of MATTERS

BOOK 2

The Structure of the Light



BOOK 3

The Origin of the Universe



Scan me